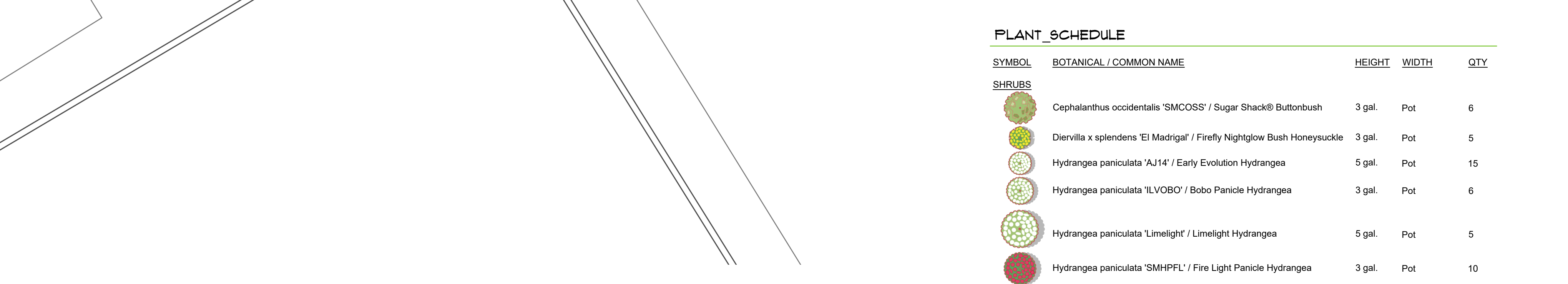
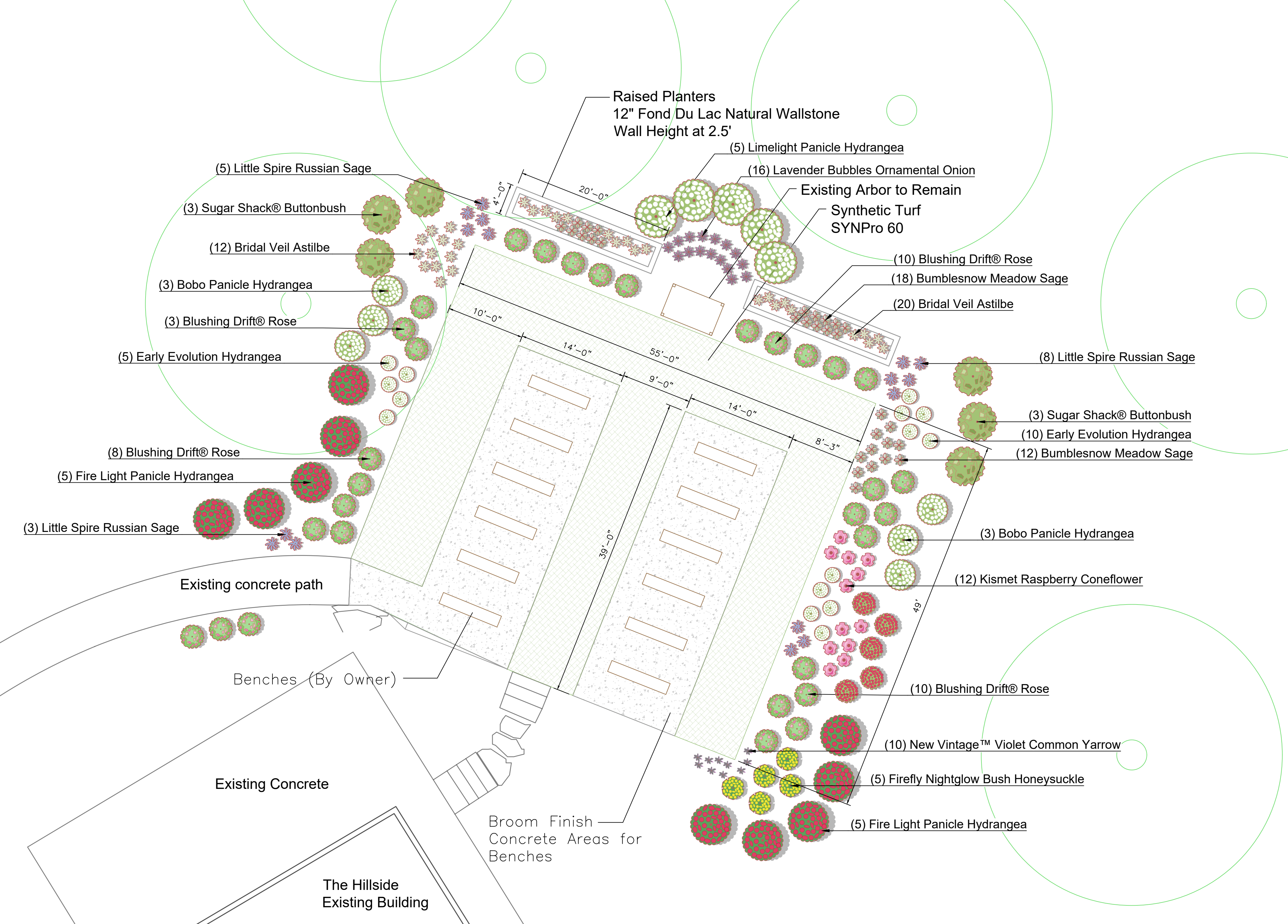


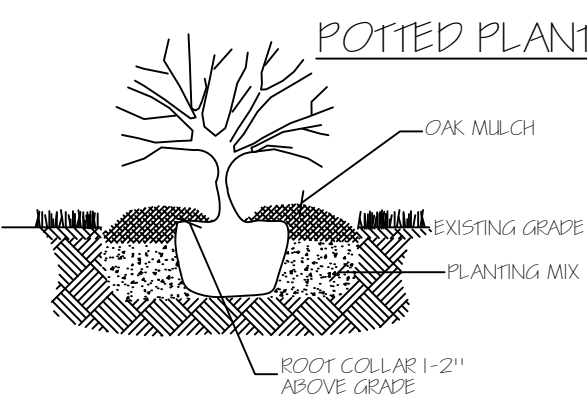
SITE PLAN

Plamann Park 2026 Site Plan - February 12, 2026



PLANTING DETAIL

- Excavate planting hole to two times the width of the root ball and to a depth equal to the root ball.
- Prepare planting hole by mixing excavated soil with 1/3 plant starter so that the root collar will be 2" higher than the existing grade.
- Prepare shrub for planting by removing any dead, or disfigured branches, rotate the shrub to its most attractive position from desired view.
- Backfill hole with planting mix, remove all air pockets & check that the root collar is 1-2" higher than existing grade.
- Prepare a ring of soil ~ 3" high around the perimeter of the planting hole, water the shrub, and then knock down ring to prepare bed for mulch.



PLANT SCHEDULE

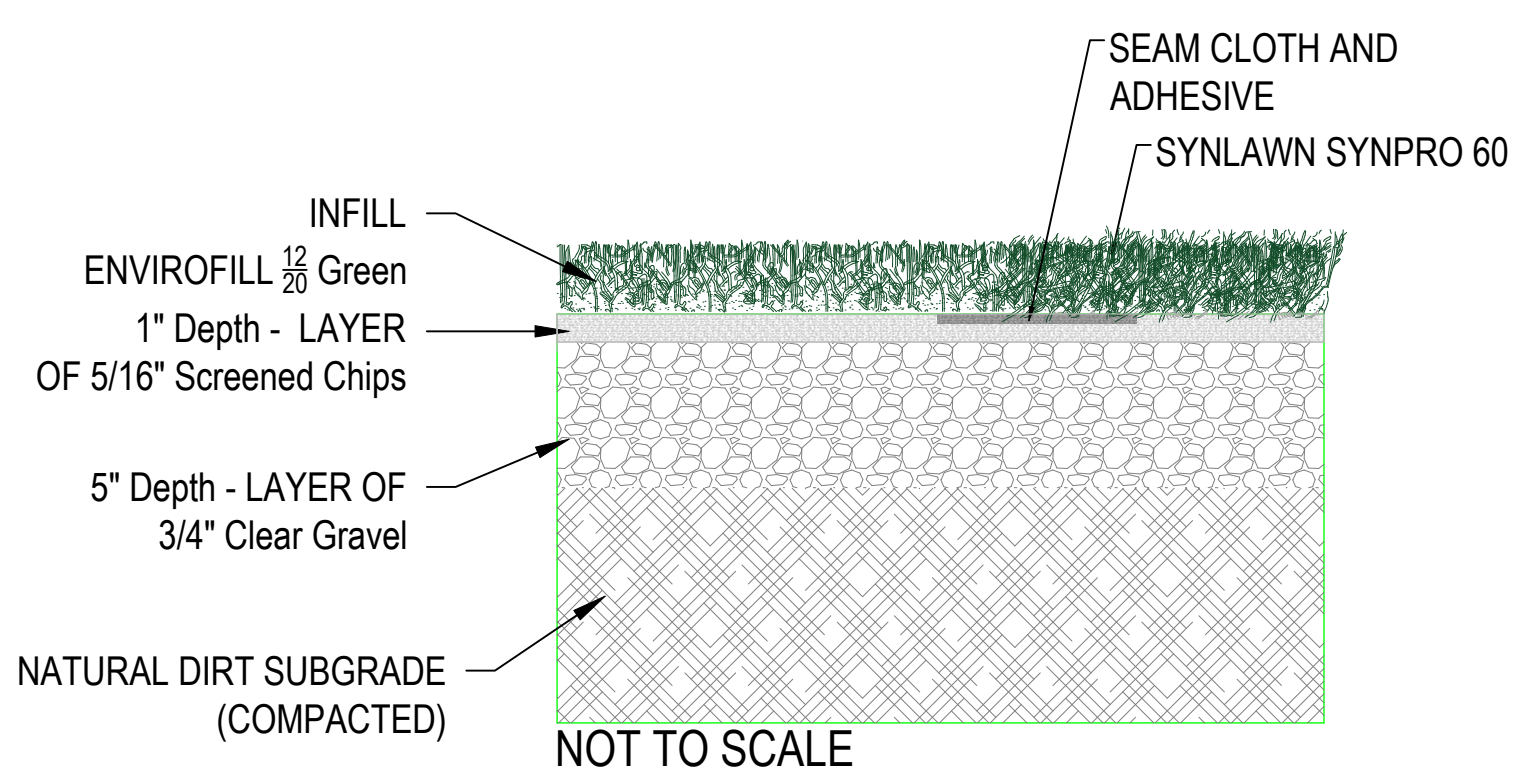
SYMBOL	BOTANICAL / COMMON NAME	HEIGHT	WIDTH	QTY
SHRUBS				
	Cephalanthus occidentalis 'SMCOSS' / Sugar Shack® Buttonbush	3 gal.	Pot	6
	Diervilla x splendens 'El Madrigal' / Firefly Nightglow Bush Honeysuckle	3 gal.	Pot	5
	Hydrangea paniculata 'AJ14' / Early Evolution Hydrangea	5 gal.	Pot	15
	Hydrangea paniculata 'ILVOBO' / Bobo Panicle Hydrangea	3 gal.	Pot	6
	Hydrangea paniculata 'Limelight' / Limelight Hydrangea	5 gal.	Pot	5
	Hydrangea paniculata 'SMHPFL' / Fire Light Panicle Hydrangea	3 gal.	Pot	10
	Rosa x 'Meifranjin' / Blushing Drift® Rose	3 gal.	Pot	31
	Symphoricarpos x doorenbosii 'Kolmcan' / Candy Snowberry	3 gal.	Pot	5
PERENNIALS				
	Achillea millefolium 'Balviolet' / New Vintage™ Violet Common Yarrow	1 gal.	Pot	10
	Allium x 'Lavender Bubbles' / Lavender Bubbles Ornamental Onion	1 gal.	Pot	16
	Astilbe x arendsii 'Bridal Veil' / Bridal Veil Astilbe	1 gal.	Pot	32
	Echinacea x 'TNECHKR' / Kismet Raspberry Coneflower	1 gal.	Pot	12
	Perovskia atriplicifolia 'Little Spire' / Little Spire Russian Sage	1 gal.	Pot	16
	Salvia nemorosa 'Bumblesnow' / Bumblesnow Meadow Sage	1 gal.	Pot	30

PROJECT DETAILS

PROJECT SCOPE:
 Install SynLawn Artificial Turf
 Type: SYNPro 60
 1/12" Pile, Apple/Field Green
 3/4" Clear Gravel Base at 5" Depth
 5/16" Screened Chips Leveling Course at 1" Depth
 Envirofill 1/20 Green
 Seam Tape
 Edges of Turf to use anchor board
 (Reference Turf Details)

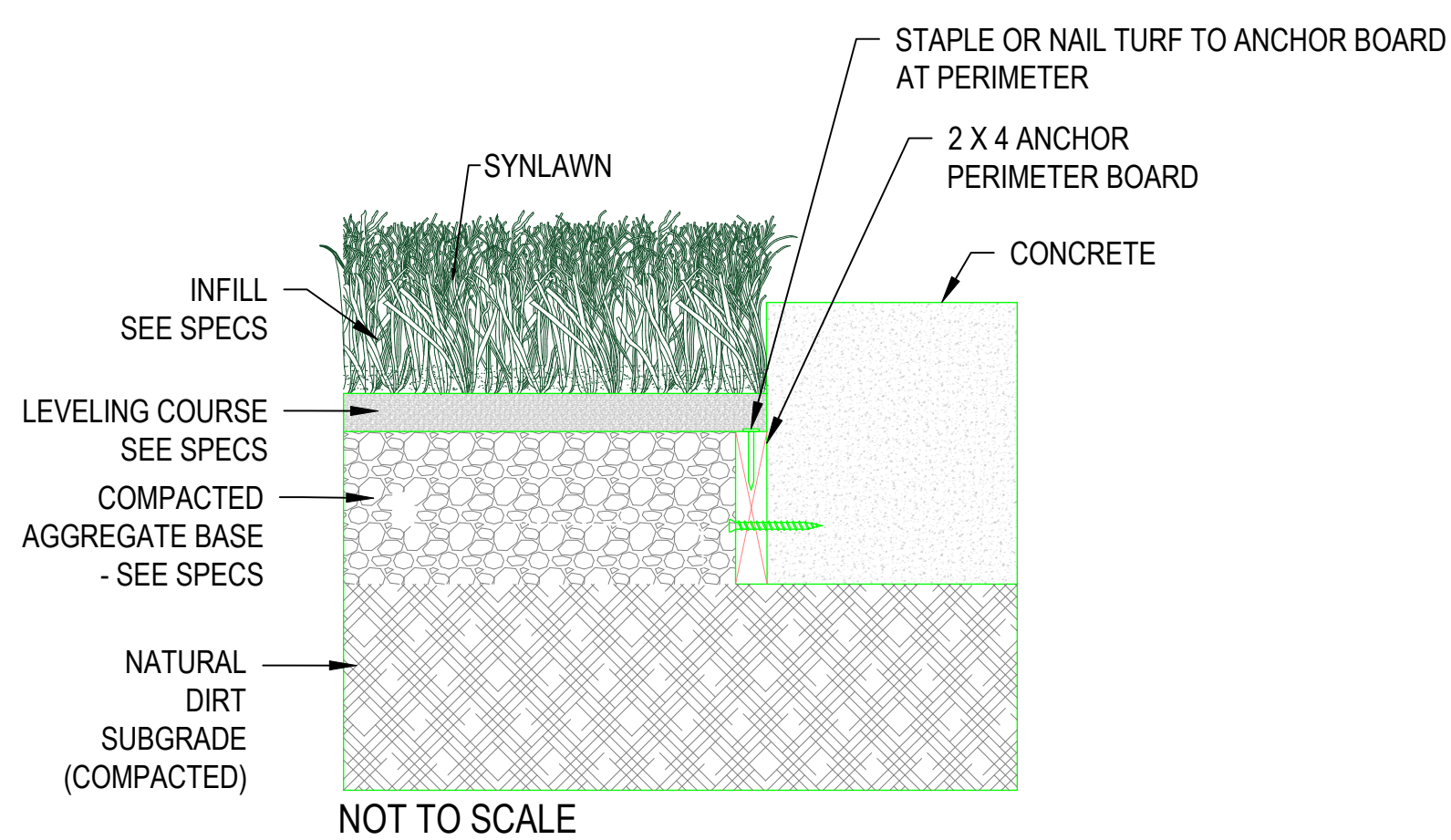
Broom Finish Concrete Bench Areas:
 4" Depth Concrete Pad
 6" Depth Base, 3/4" Clear Gravel

Plants to be pocket planted within prairie area along edges of turf as per design plan.
 Each plant to include leaf compost and topdress with Shredded Oak Mulch
 (Reference Planting Detail)

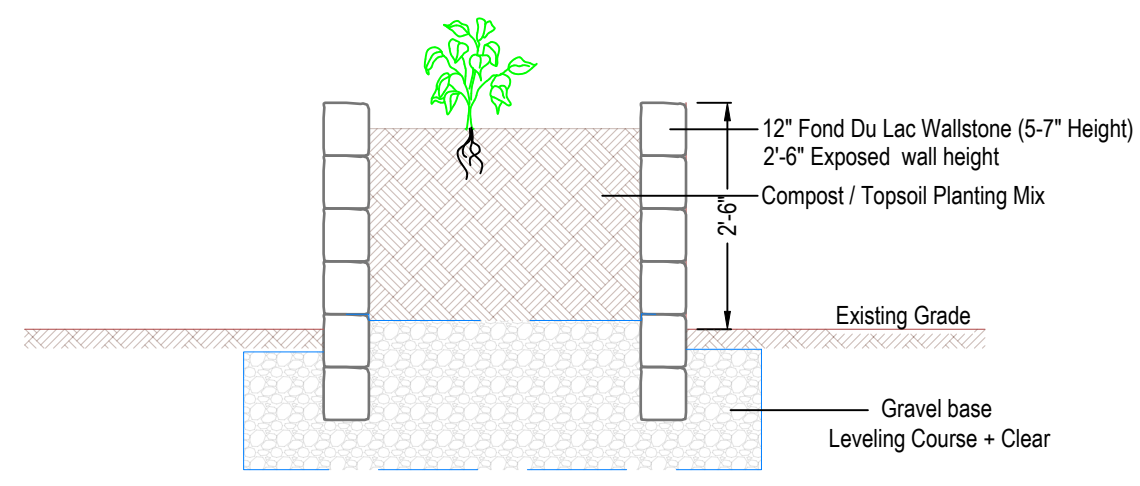


SYNLAWN TURF INSTALLATION DETAIL

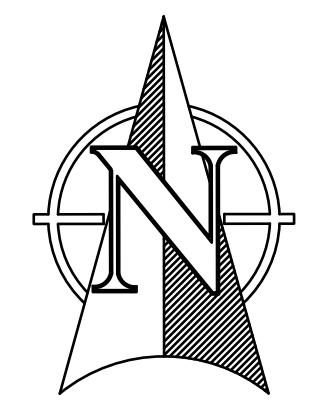
TURF MUST BE INSTALLED AND SEAMED WITH ADJACENT PIECES RUNNING IN THE SAME DIRECTION. SEAMS SHOULD BE GLED WITH SEAMING GLUE AND SEAMING CLOTH AS PER MANUFACTURER'S SPECIFICATIONS.



SYNLAWN TURF INSTALLATION DETAIL CONCRETE EDGE DETAIL



PLANTER WALL SECTION VIEW



SCALE SCALE



Plamann Park
 1375 E. Broadway Drive
 Appleton, WI 54913

DATE

REVISIONS DATE