

ADDENDUM 1

**Project:
CTH JJ Reconstruction**

**Bid/Proposal Opening:
03/12/2026 10:00 AM**

To All Potential Bidders:

The following changes and/or modifications have been made for the subject proposal:

1. Revise Bid Form to remove bid items 415.0605, 460.5223, 460.5224, and 465.0120.
2. Revise quantity for bid items 637.2210, 650.9920.
3. Revise article 8 and 13 of the Special Provisions and include Attachment E to include the approved NOI General permit for storm water discharge.
4. Revise plan sheets 83 and 107 to include "All Way" plaques on the Stop Signs.
5. Revise plan sheet 108 to add item 650.9920 Construction Staking Slope Stakes.

This page shall be submitted with all proposals in order to acknowledge Addendum 1.

Firm Name: _____

Authorized Signature: _____

Printed Name: _____

Date: _____

This Addendum was prepared under the direction of Outagamie County.

Michael Morman

Michael Morman, P.E.
Highway Engineer
March 6, 2026

BID FORM – Addendum 1

PROJECT IDENTIFICATION: Project 582500
CTH JJ Reconstruction
Black Otter Creek Bridge to Nash Street
Village of Hortonville, Outagamie County

THIS BID IS SUBMITTED TO: Outagamie County Highway Department
Michael Morman, P.E., Highway Engineer
1313 Holland Road
Appleton, WI 54911

1. The undersigned BIDDER proposes and agrees, if this Bid is accepted, to enter into an agreement with OWNER in the form included in the Contract Documents to perform and furnish all Work as specified or indicated in the Contract Documents for the Bid Price and within the Bid Times indicated in this Bid and in accordance with the other terms and conditions of the Contract Documents.
2. BIDDER accepts all of the terms and conditions of the Advertisement or Invitation to Bid and Instructions to Bidders, including without limitation those dealing with the disposition of Bid security. This Bid will remain subject to acceptance for 90 days after the date of bid opening. BIDDER will sign and deliver the required number of counterparts of the Agreement with the Bonds and other documents required by the Bidding Requirements within ten (10) days after the date of OWNER's Notice of Award.
3. In submitting this Bid, BIDDER represents, as more fully set forth in the Agreement, that:

(a) BIDDER has examined copies of all the bidding documents and of the following Addenda, receipt of all which is hereby acknowledged:

Addendum Number	Date of Addendum
_____	_____
_____	_____

- (b) BIDDER has visited the site and become familiar with and is satisfied as to the general, local and site conditions that may affect cost, progress, performance and furnishing of the Work;
- (c) BIDDER is familiar with and is satisfied as to all federal, state and local laws and regulations that may affect cost, progress, performance and furnishing of the Work.
- (d) BIDDER is aware of the general nature of Work to be performed by OWNER and others at the site that relates to Work for which this Bid is submitted as indicated in the Contract Documents.
- (e) BIDDER has correlated the information known to BIDDER, information and observations obtained from visits to the site, reports and drawings identified in the bidding documents and all additional examinations, investigations, explorations, tests, studies and data with the bidding documents.
- (f) BIDDER has given OWNER written notice of all conflicts, errors or discrepancies that BIDDER has

discovered in the bidding documents and the written resolution thereof by OWNER is acceptable to BIDDER, and the bidding documents are generally sufficient to indicate and convey understanding of all terms and conditions for performing and furnishing the Work for which this Bid is submitted.

- (g) This Bid is genuine and not made in the interest of or on behalf of any undisclosed person, firm or corporation and is not submitted in conformity with any agreement or rules of any group, association, organization or corporation; BIDDER has not directly or indirectly induced or solicited any other BIDDER to submit a false or sham Bid; BIDDER has not solicited or induced any person, firm or corporation to refrain from bidding; and BIDDER has not sought by collusion to obtain for itself any advantage over any other BIDDER or over OWNER.

4. BIDDER will complete the Work in accordance with the bidding documents for the prices shown on the attached schedules of unit prices. The OWNER reserves the right to accept any bid alternate in its entirety. BIDDER is not required to submit all bid alternates but must complete at least one of the bid alternates in its entirety to be considered a complete bid. OWNER reserves the right to reject any bid alternates that are incomplete.

BIDDER acknowledges that unit quantities contained in some parts of the proposal are not guaranteed and final payment will be based on actual quantities determined as provided in the contract documents and installed in the field.

5. BIDDER agrees that the Work will be substantially complete and completed and ready for final payment in accordance with the Special Provisions on or before the dates or within the number of calendar days indicated in the Agreement. BIDDER accepts the provisions of the Agreement as to liquidated damages in the event of failure to complete the Work within the times specified in the contract documents.

6. The following documents are either attached hereto or previously submitted and made a condition of this Bid:

- (a) Required Bid Security in the form of (Bond) (Certified Check) attached hereto in the amount of at least ten percent (10%) of the maximum bid price.
- (b) A tabulation of Subcontractors, Suppliers and other persons and organizations required to be identified in this Bid.

7. Communications concerning this Bid shall be addressed to the address of BIDDER indicated below.

8. Terms used in this Bid which are defined in the General Conditions or Instructions will have the meanings indicated in the General Conditions or Instructions.

BID FORM – Addendum 1

Project 582500 - Base Bid Black Otter Creek Bridge to Nash Street CTH JJ Reconstruction Outagamie County		Qty	Units	Unit Price	Cost
Item #	Item Description				
201.0120	Clearing	246	ID	\$	\$
201.0220	Grubbing	345	ID	\$	\$
204.0100	Removing Concrete Pavement	674	SY	\$	\$
204.0130	Removing Curb	40	LF	\$	\$
204.0150	Removing Curb and Gutter	5394	LF	\$	\$
204.0155	Removing Concrete Sidewalk	3219	SY	\$	\$
204.0185	Removing Masonry	11.2	CY	\$	\$
204.0185	Removing Concrete Bases	30	Each	\$	\$
204.0210	Removing Manholes	12	Each	\$	\$
204.0220	Removing Inlets	27	Each	\$	\$
204.0245.01	Removing Storm Sewer 4-Inch to 12-Inch	1059	LF	\$	\$
204.0245.02	Removing Storm Sewer Greater than 12-Inch	684	LF	\$	\$
205.0100	Excavation Common	10705	CY	\$	\$
209.2100	Backfill Granular Grade 2	306	Ton	\$	\$
213.0100	Finishing Roadway	1	Each	\$	\$
305.0120	Base Aggregate Dense 1 1/4-Inch	10380	Ton	\$	\$
311.0110	Breaker Run	500	Ton	\$	\$
415.0410	Concrete Pavement Approach Slab	125	SY	\$	\$
415.4100	Concrete Pavement Joint Filling	125	SY	\$	\$
416.0610	Drilled Tie Bars	101	Each	\$	\$
415.0605	Tack Coat	660	Gal	\$	\$
460.5223	HMA Pavement 3LT 58-28 S	3015	Ton	\$	\$
460.5224	HMA Pavement 4LT 58-28 S	3015	Ton	\$	\$
465.0120	Asphaltic Surface Driveways and Field Entrances	159	Ton	\$	\$
504.0500	Concrete Masonry Retaining Walls	1.5	CY	\$	\$
513.2001	Railing Pipe	37	LF	\$	\$
520.8000	Concrete Collars for Pipe	15	Each	\$	\$
522.1021	Apron Endwalls for Culvert Pipe Reinforced Concrete 21-Inch	1	Each	\$	\$

619.0100	Mobilization	1	LS	\$	\$
624.0100	Water	180	MGAL	\$	\$
628.1504	Silt Fence	345	LF	\$	\$
628.1520	Silt Fence Maintenance	345	LF	\$	\$
628.1905	Mobilizations Erosion Control	4	Each	\$	\$
628.1910	Mobilizations Emergency Erosion Control	4	Each	\$	\$
628.2002	Erosion Mat Class I Type A	3538	SY	\$	\$
628.6005	Turbidity Barrier	210	SY	\$	\$
628.7010	Inlet Protection Type B	2	Each	\$	\$
628.7020	Inlet Protection Type D	59	Each	\$	\$
628.7560	Tracking Pads	2	Each	\$	\$
630.0500	Seed Water	79	MGAL	\$	\$
637.2210	Signs Reflective Type II Reflective H	47.5	SF	\$	\$
638.2102	Moving Signs Type II	61	Each	\$	\$
638.3000	Removing Signs Type II	7	Each	\$	\$
638.3000	Removing Small Sign Supports	24	Each	\$	\$
642.5201	Field Office Type C	1	Each	\$	\$
644.1410	Temporary Pedestrian Surface Asphalt	5700	SF	\$	\$
644.1601	Temporary Curb Ramp	60	DAY	\$	\$
644.1605	Temporary Pedestrian Detectable Warning Field	100	SF	\$	\$
644.1810	Temporary Pedestrian Barricade	650	LF	\$	\$
645.0135	Geogrid Type SR	200	SY	\$	\$
646.1020	Marking Line Epoxy 4-Inch	4297	LF	\$	\$
646.4020	Marking Line Epoxy 10-Inch	146	LF	\$	\$
646.6120	Marking Stop Line Epoxy 18-Inch	158	LF	\$	\$
646.7520	Marking Crosswalk Epoxy Block Style 24-Inch	708	LF	\$	\$
646.8220	Marking Island Nose Epoxy	3	Each	\$	\$
646.8320	Marking Parking Stall Epoxy	450	LF	\$	\$
646.9000	Marking Removal Line 4-Inch	80	LF	\$	\$
650.4000	Construction Staking Storm Sewer	47	Each	\$	\$
650.4500	Construction Staking Subgrade	2840	LF	\$	\$
650.5000	Construction Staking Base	2840	LF	\$	\$
650.5500	Construction Staking Curb Gutter and Curb & Gutter	5831	LF	\$	\$

650.7000	Construction Staking Concrete Pavement	60	LF	\$	\$
650.8501	Construction Staking Electrical Installations	1	Each	\$	\$
650.9000	Construction Staking Curb Ramps	23	Each	\$	\$
650.9500	Construction Staking Sidewalk	1	Each	\$	\$
650.9911	Construction Staking Supplemental Control	1	Each	\$	\$
650.9920	Construction Staking Slope Stakes	2840	LF	\$	\$
652.0225	Conduit Rigid Nonmetallic Schedule 40 2-Inch	1953	LF	\$	\$
652.0325	Conduit Rigid Nonmetallic Schedule 80 2-Inch	545	LF	\$	\$
653.0154	Pull Boxes Non-Conductive 24x36-Inch	11	Each	\$	\$
653.0905	Removing Pull Boxes	7	Each	\$	\$
654.0101	Concrete Bases Type 1	2	Each	\$	\$
654.0105	Concrete Bases Type 5	20	Each	\$	\$
654.0230	Concrete Control Cabinet Bases Type L30	1	Each	\$	\$
655.0610	Electrical Wire Lighting 12 AWG	4200	LF	\$	\$
655.0615	Electrical Wire Lighting 10 AWG	240	LF	\$	\$
655.0620	Electrical Wire Lighting 8 AWG	10755	LF	\$	\$
655.0625	Electrical Wire Lighting 6 AWG	5304	LF	\$	\$
656.0201	Electrical Service Meter Breaker Pedestal	1	Each	\$	\$
659.2130	Lighting Control Cabinets 120/240 30-Inch	1	Each	\$	\$
690.0150	Sawing Asphalt	3436	LF	\$	\$
690.0250	Sawing Concrete	1475	LF	\$	\$
999.1501.S	Crack and Damage Survey	44	Each	\$	\$
SPV.0060.01	RRFB Assembly	2	Each	\$	\$
SPV.0060.02	Removing Existing Street Lighting Units	28	Each	\$	\$
SPV.0060.03	Lighting Assembly Single Fixture	20	Each	\$	\$
SPV.0060.04	Temporary Mailbox Accommodations	1	Each	\$	\$
SPV.0060.05	Post Tubular Steel (Black) 3-Inch with V-Lock Post Anchors, 12-Foot	25	Each	\$	\$
SPV.0060.06	Post Tubular Steel (Black) 3-Inch with V-Lock Post Anchors, 14-Foot	2	Each	\$	\$

Special Provisions – Addendum 1

Table of Contents

Article	Description	Page #
1.	General.....	3
2.	Scope of Work.....	4
3.	Prosecution and Progress.....	4
4.	Environmental Protection, Aquatic Exotic Species Control.	6
5.	Erosion Control Structures.....	6
6.	Traffic.	7
7.	Traffic Control and Traffic Control Detour.	8
8.	Utilities	9
9.	Work By Others.....	14
10.	Referenced Construction Specifications.....	14
11.	Municipality Acceptance of Sanitary Sewer and Water Main Construction.....	14
12.	Existing Street Lighting.	14
13.	Information to Bidders, Permitting	14
14.	Notice to Contractor – Petroleum Contaminated Soils.	15
15.	Notice to Contractor, Notification of Demolition and/or Renovation No Asbestos Found.....	15
16.	Notice to Contractor – Removing Concrete.	15
17.	Notice to Contractor – Curb and Gutter and Sidewalk Construction.	16
18.	Coordination with Businesses and Residents.....	16
19.	Excavation, Hauling, Stockpiling, and Disposal of Contaminated Soil (Undistributed), Item No. 205.0501.S.....	16
20.	Concrete Staining Multi-Color B-44-489, Item 517.1015.S.....	17
21.	Architectural Surface Treatment B-44-489, Item 517.1050.S.....	19
22.	Crack and Damage Survey, Item 999.1501.S.	20
23.	Installing and Maintaining Bird Deterrent System Station STA 50+45, Item 999.2000.S;.....	21
24.	RRFB Assembly, Item SPV.0060.01.	23
25.	Removing Existing Street Lighting Units, SPV.0060.02.	27
26.	Lighting Assembly, Item SPV.0060.03.....	28
27.	Temporary Mailbox Accommodations, Item SPV.0060.04.	28
28.	Post Tubular Steel (Black) 3-Inch with V-Lock Post Anchors, 12-Feet, Item SPV.0060.05; 14-Feet, Item SPV.0060.06; and 16-Feet, Item SPV.0060.07.....	29
29.	Concrete Curb and Gutter Gaps, Item SPV.0060.08.....	29
30.	Yard Drain 24-Inch, Item SPV.0060.09; and Casting for Yard Drain 24-Inch, Item SPV.0060-10.	30
31.	Remove and Salvage Village Clock CTH JJ (W. Main Street) and Pine Street, Item SPV.0060.11.....	30
32.	Removing Tree Grates and Frames, Item SPV.0060.12.	31
33.	Removing and Restacking Block Retaining Wall, Item SPV.0060.13	32
34.	Concrete Curb and Gutter 24-Inch, Type D, Item SPV.0090.01.....	32
35.	Concrete Curb and Gutter HES 30-Inch, Type D, Item SPV.0090.02.	33

36.	Concrete Retaining Curb, Item SPV.0090.03.	33
37.	Storm Sewer Lateral 4-Inch, Item SPV.0090.04; and 6-Inch, Item SPV.0090.05.	34
38.	Remove and Salvage Traffic Signals CTH JJ (W. Main Street) and CTH M (Nash Street), Item SPV.0105.01.	35
39.	Salvage Paver Bricks, Item SPV.0165.01.....	35
40.	Thickened Edge Concrete Sidewalk, Item SPV.0165.02.....	36
41.	Salvage and Reset Landscaping, Item SPV.0165.03.....	36
42.	Restoration, Item SPV.0180.03.	37

repair or replace any damage done to the above during the construction operations at contractor expense.

11. The traffic requirements are subject to change at the direction of the engineer in the event of an emergency.

12. Measurement and Payment

- a. The contract items for Traffic Control and Traffic Control Detour shall meet the requirements of the Plans, Contract Specifications, and Special Provisions, and will be measured and paid for at the contract lump sum price. These items include furnishing, installing, and maintaining all traffic control items for work operations in accordance with Section 643 of the WisDOT Standard Specifications and the Manual on Uniform Traffic Control Devices (MUTCD). The cost of preparing a detailed traffic control and access plan is also included in the contract lump sum price.
- b. Contract items Traffic Control and Traffic Control Detour will be measured once for the contract. The contract lump sum price includes furnishing, installing, removing, covering, and reinstalling traffic control items as needed to meet the requirements of this contract.

8. Utilities.

CTH JJ Roadway Reconstruction

~~This contract does not come under the provision of Administrative Rule Trans 220, step 107-066 (20240703)~~

~~There are utility facilities within the construction limits of this project. Coordinate construction activities with a call to Diggers Hotline or a direct call to the utilities for the underground facilities in the area, as required per statutes. Take all required precautions when working within 18 inches of underground utilities. Always use caution to maintain the integrity of underground utilities and maintain OSHA code clearances from overhead facilities.~~

~~Work around or remove and dispose of any discontinued utility facility during excavation. Any removal and disposal are incidental to common excavation.~~

~~AT&T~~

~~AT&T has buried communications lines behind the existing and proposed curb along the north side of CTH JJ from west of the Black Otter Creek bridge to Nash Street. In addition, there are buried communications along the east side of Mill Street behind the existing and proposed curb with a crossing on CTH JJ at approximately Sta. 60+95.~~

~~AT&T proposes the following work:~~

- ~~● Sta. 54+70 Lt to Sta. 68+00 Lt: Potential conflicts with proposed streetlight locations including streetlighting conduit throughout.~~

~~Relocations are planned to be completed prior to construction.~~

~~Contact: Michael Decet | Email: md4321@att.com Phone: (920) 840-4344~~

~~BUGTUSSEL (Communications)~~

~~BUGTUSSEL has buried communications lines located behind the existing and proposed curb from Crystal Springs Drive to N Cherry Street, with a crossing of CTH JJ at Sta. 53+30. These lines are located under the proposed sidewalk from approximately Sta. 50+50 Rt to Sta. 53+30 Rt; from approximately Sta. 53+30 Lt to Sta. 54+00 Lt; and along the west side of Cherry Street. There is also a hand hole located within the proposed sidewalk limits at Sta. 53+30 Rt.~~

~~BUGTUSSEL proposes the following work:~~

- ~~● Handhole Sta. 53+30 Rt: Potential conflict with proposed sidewalk.~~

~~Relocations are planned to be completed prior to construction.~~

~~Contact: Erin Wichmann | Email: erin.wichmann@btussel.com Phone: (920) 940-0112 Ext. 102~~

Village of Hortonville (Water)

The Village of Hortonville has underground water facilities and hydrants located throughout the project limits.

Adjustments to the Village of Hortonville water facilities are included as bid items within the contract and will be constructed concurrently with the project.

Contact: Aaron Steber | Email: dpw@vhortonville.com Phone: (920) 779-6011

Village of Hortonville (Sanitary Sewer)

The Village of Hortonville has underground sanitary sewer facilities located throughout the project limits.

Adjustments to the Village of Hortonville sanitary sewer facilities are included as bid items within the contract and will be constructed concurrently with the project.

Contact: Aaron Steber | Email: dpw@vhortonville.com Phone: (920) 779-6011

We Energies (Electric)

We Energies has overhead electrical lines that cross CTH JJ at approximately Sta.53+90 and Sta.66+25. In addition, We Energies has utility poles/streetlights at the following locations: Sta.51+10 Lt, Sta.54+00 Lt, Sta.55+10 Lt, 57+84 Rt, Sta.59+55 Lt, and Sta. 60+95 Lt and Rt.

We Energies proposes the following work:

- ~~Removal of existing street lights~~
- ~~Overhead Crossing Sta.53+90 Rt: Potential conflict with proposed streetlight.~~
- ~~Utility pole Sta.55+10 Rt: Potential conflict with proposed sidewalk.~~
- ~~Utility pole Sta. 59+55 Lt: Potential conflict with proposed sidewalk.~~
- ~~Utility poles Sta. 60+95 Lt and Rt: Potential conflict with proposed curb & gutter.~~
- ~~Overhead Crossing Sta.66+25 Lt: Potential conflict with proposed streetlight.~~

Relocations are planned to be completed prior to construction.

Contact: Zach Duga Zachary.duga@we-energies.com Phone: (920) 380-3458

We Energies (Gas)

We Energies has gas mains that cross CTH JJ at the following locations: Sta.53+84 and Sta.60+58. In addition there is a gas main located behind the existing and proposed curb from Sta.66+60 Rt to Sta. 71+00 Rt.

We Energies proposes the following work:

- ~~Gas main crossing at Sta.60+58: Potential conflict with street lighting conduit left and right.~~
- ~~Gas main Sta.66+60 Rt to Sta.71+00 Rt: Potential conflict with proposed sidewalk.~~

Relocations are planned to be completed prior to construction.

Contact: Eddie A. Hedlund Eddie.Hedlund@we-energies.com Phone (920) 380-3240

This contract does not come under the provision of Administrative Rule Trans 220.

stp-107-066 (20240703)

There are utility facilities within the construction limits of this project. Coordinate construction activities with a call to Diggers Hotline or a direct call to the utilities for the underground facilities in the area, as required per statutes. Contact utilities with facilities located within the project limits to obtain a copy of their work plan and schedule for utility work prior to and concurrent with this project. Take all required precautions when working within 18-inches of underground utilities. Always use caution to maintain the integrity of underground utilities and maintain OSHA code clearances from overhead facilities.

Work around or remove and dispose of any discontinued utility facility during excavation. Any removal and disposal are incidental to common excavation.

AT&T (Communications)

AT&T has buried communications lines behind the existing and proposed curb along the north side of CTH JJ from west of the Black Otter Creek bridge to Nash Street. In addition, there are buried

communication lines along the east side of Mill Street behind the existing and proposed curb with a crossing on CTH JJ at approximately Sta.60+95.

AT&T proposes the following work:

- Sta.57+50 Lt to Sta.68+00 Lt: Potential conflicts with proposed streetlight locations including streetlighting conduit, will be adjusted concurrently with work under this contract.
- Sta.49+50 Lt to Sta. 69+60 Lt: Potential conflicts with storm sewer and watermain will be adjusted concurrently with work under this contract.

Contact AT&T 5 days prior to beginning storm sewer, sanitary sewer, and watermain work. AT&T will relocate their facilities in conflict concurrently with work under this contract.

Contact AT&T 5 days prior to beginning streetlight work to coordinate relocation work. AT&T will relocate their facilities in conflict concurrently with work under this contract.

Contact: Michael Decet | Email: md4321@att.com Phone: (920) 840-4344

BUGTUSSEL (Communications)

BUGGTUSSEL has buried communications lines located behind the existing and proposed curb from Crystal Springs Drive to N Cherry Street, with a crossing of CTH JJ at Sta. 53+30. These lines are located under the proposed sidewalk from approximately Sta.50+50 Rt to Sta.53+30 Rt; from approximately Sta. 53+30 Lt to Sta.54+00 Lt; and along the west side of Cherry Street. There is also a hand hole located within the proposed sidewalk limits at Sta. 53+30 Rt.

BUGGTUSSEL proposes the following work:

- Handhole Sta. 53+30 Rt: Potential conflict with proposed sidewalk. Contact Buggtussel 5 days in advance of beginning sidewalk work at this location. Buggtussel will adjust or relocate the handhole concurrently with work under this contract.

Contact: Erin Wichmann | Email: erin.wichmann@btussel.com Phone: (920) 940-0112 Ext. 102

Village of Hortonville (Water)

The Village of Hortonville has underground water facilities and hydrants located throughout the project limits.

Adjustments to the Village of Hortonville water facilities are included as bid items within the contract and will be constructed concurrently with the project.

Contact: Aaron Steber | Email: dpw@vhortonville.com Phone: (920) 779-6011

Village of Hortonville (Sanitary Sewer)

The Village of Hortonville has underground sanitary sewer facilities located throughout the project limits.

Adjustments to the Village of Hortonville sanitary sewer facilities are included as bid items within the contract and will be constructed concurrently with the project.

Contact: Aaron Steber | Email: dpw@vhortonville.com Phone: (920) 779-6011

We Energies (Electric)

We Energies has overhead electrical lines that cross CTH JJ at approximately Sta.53+90 and Sta.66+25. In addition, We Energies has utility poles/streetlights at the following locations: Sta.51+10 Lt, Sta.54+00 Lt, Sta.55+10 Lt, 57+85 Rt, Sta.59+56 Lt, and Sta. 60+95 Lt and Rt.

We Energies proposes the following work:

- At STA 54+00.91, Lt, WE Energies plans to maintain Pole No. 12-14926 and the existing streetlight. If a pole hold is required during construction, contact the Line Crew Leader at (920) 380-3558, a minimum of 10 working days prior to the pole hold being needed.
-
- At STA 55+10.73 Lt, Pole No. 55-318 will be removed and replaced with a new pole. The new pole will be installed NW of the existing pole and relocated away from the sidewalk. A new guy wire will be installed, and the streetlight will be transferred to new pole.

-
- At STA 57+85.39 Rt, Pole No. 59-4089, the streetlight and pole will be removed entirely, as well as the overhead wire connecting to pole.
-
- Disconnect the overhead street lighting wire from Pole No. 11-11552 at STA 59+21.42 to Pole No. 55-322 at STA 59+56.07. Street light pole No. 55-322 will be removed entirely.
-
- Pole 12-12074 near intersection of W Main St and N Nash St will be replaced with a taller pole. The new pole will be installed south of the existing pole.
-
- Disconnect the overhead street lighting wire from Pole No. 12-12063 to Pole No. 13-08279 at STA 68+48.73.
-
- Street light pole No. 13-08279 will be removed entirely. Guy wire will be replaced at Pole No. 12-12063.
-
- Any facilities not explicitly identified as being relocated and/or adjusted have been deemed to be not in conflict and will remain in place as is. We Energies has determined that the project is constructible with these facilities left within the work-zone.

The proposed relocations are anticipated to start no later than March 23, 2026, with an estimated 30 working days to complete the relocations.

The Village of Hortonville will be submitting a permit application for an electric service for the new lighting controller cabinet at the CTH JJ and Pine Street intersection. The Village will also be submitting a permit application for the demolition of the existing electric service located at the intersection of Pine Street and Alley No. 1. This work will be done concurrently with work under this contract.

Contact: Zach Duga Zachary.duga@we-energies.com Phone: (920) 380-3458

We Energies (Gas)

We Energies has gas mains that cross CTH JJ at the following locations: Sta.53+84 and Sta.60+58. In addition, there is a gas main located behind the existing and proposed curb from Sta.66+60 Rt to Sta. 71+00 Rt.

We Energies will install new gas facilities on CTH JJ from Sta. 48+35 to Sta.70+60. The new facilities will be located under the proposed sidewalk on the south side of CTH JJ. New facilities will also be installed on the side roads throughout the project. We Energies gas facility installations will be completed concurrently with work operations under this contract. The existing facilities will be discontinued and will remain in place.

We Energies currently anticipates beginning the relocation work in early April of 2026 and anticipates that it will require 30 working days to complete the work.

Contact: Eddie A. Hedlund Eddie.Hedlund@we-energies.com Phone (920) 380-3240

Black Otter Creek Bridge Replacement, B-44-489

This contract does not come under the provision of Administrative Rule Trans 220.

The utility work plan includes additional detailed information regarding the location of known discontinued, relocated, or removed utility facilities. These can be requested from the department during the bid preparation process or from the project engineer after the contract has been awarded and executed.

The scope of work for this contract has been determined to not impact, interfere or conflict with existing utilities within the contract limits. Notify the engineer of any potential utility conflicts. Coordinate with the engineer to adjust plans as needed to avoid any unanticipated utility conflicts.

Some of the utility work described below is dependent on prior work being performed by the contractor at a specific site. In such situations, provide the engineer and the affected utility a good faith notice of when the utility is to start work at the site. Provide this notice 14 to 16 calendar days in advance of when the prior work will be completed and the site will be available to the utility. Follow-up with a confirmation

9. Work By Others.

The Wisconsin Department of Transportation will be reconstructing STH 76 in the Village of Greenville during the 2026 construction season. The STH 76 detour route will use CTH M / N. Olk Street in the Village of Hortonville. Additional information can be found on the DOT's website for State ID 6517-16-71 proposal 024. Coordinate with WisDOT project team/contractor to maintain detour.

Fine grading and HMA paving will be completed on this project by Outagamie County forces. Fine grading and HMA paving work will not be part of this contract. Contractor shall construct the base aggregate dense conforming to Section 301.3 of the standard specifications. At the completion of base aggregate placement on CTH JJ (Old STH 15) and connecting sideroads within the project limits and prior to completion of the Base Staking by the contractor, the engineer and Outagamie County will evaluate the base aggregate for acceptance. Coordinate base aggregate evaluation with Outagamie County and provide a minimum of three (3) working days of advance notification to the county. Complete Base Staking in accordance with the standards specifications and coordinate HMA paving operations with Outagamie County provide a minimum of ten (10) working days advance notification to the county after the Base Staking is completed. Contractor's schedule shall include the county's fine grading and HMA paving on the project in a maximum of three (3) stages. Contractor's other work operations on the project shall not conflict with Outagamie County's fine grading or HMA paving work. Outagamie County will need a total of 12 working days to complete the fine grading and HMA paving on the project.

Contact: Michael Morman, Outagamie County Assistant Highway Engineer at 920-850-3269

10. Referenced Construction Specifications.

Construct all Village of Hortonville sanitary sewer and water main items in accordance with the Village Specifications listed in **Attachment C**.

Construct all Memorial Square Design items in accordance with the specifications listed in **Attachment D**.

11. Municipality Acceptance of Sanitary Sewer and Water Main Construction.

Both Outagamie County and the Village of Hortonville personnel will inspect materials and placement of sewer and water main items under this contract. Construction staking for the sewer and water will be completed by the Village of Hortonville. Post-placement testing of the system, including televising, air and pressure testing shall be completed by the contractor. Final acceptance of the sanitary sewer and water main will be by the Village of Hortonville.

12. Existing Street Lighting.

The existing street light poles and fixtures on N Water Street are owned by the Village of Hortonville. The intent of the project is to maintain as much of the existing street lighting as practical throughout the construction of this project. Coordinate with the Village of Hortonville Director of Public Works to develop a removal plan. Contact Aaron Steber, Director of Public Works, Village of Hortonville at 920-779-6011.

A detail sheet showing the layout of the existing street lighting system is included in the plans. Submit to the engineer for approval a detailed plan of how the existing lighting will be maintained, and for how long it can be expected to be maintained. Submit this plan a minimum of ten (10) days prior to the preconstruction conference. This item will be considered incidental to other items of work.

13. Information to Bidders, Permitting.

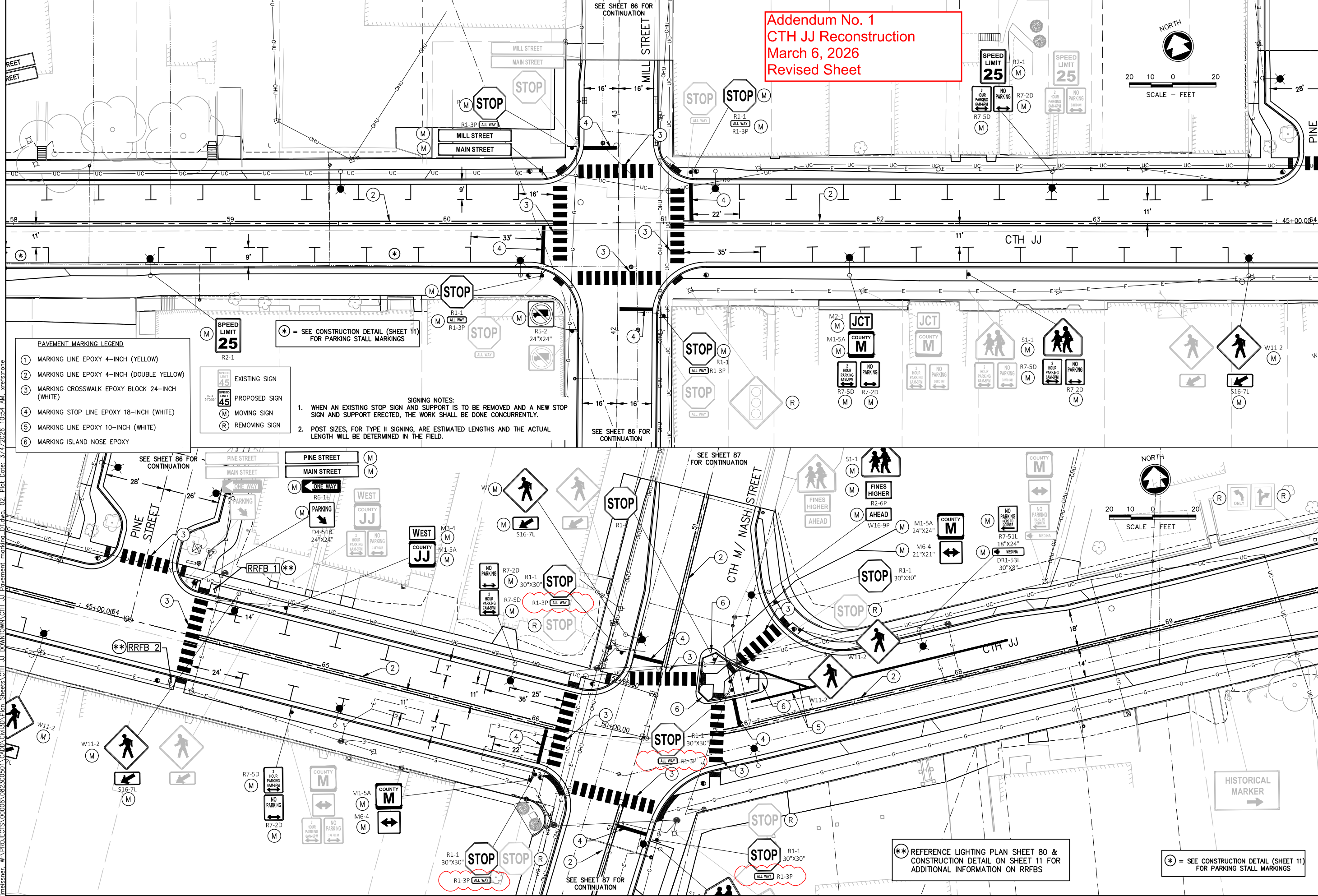
The department has obtained permit coverage through the Wisconsin Department of Natural Resources to discharge storm water associated with land disturbing construction activities under this contract. Conform to all permit requirements for the project.

The permit can be found at:

<https://widnr.widen.net/s/s5mwp2gd7s/finalsignedwisdotcsgp>

A certificate of permit coverage will be provided by Outagamie County prior to the start of construction. Post the permit certificate in a conspicuous place at the construction site. **See Attachment E for approved permit.**

W:\PROJECTS\00006\082300501\CADD\CH30\Plan Sheets\CTH JJ DOWNTOWN\CTH JJ Pavement marking.DWG, 02_Plot Date: 3/4/2026 10:54 AM, xref:signing



Addendum No. 1
CTH JJ Reconstruction
March 6, 2026
Revised Sheet

- PAVEMENT MARKING LEGEND**
- ① MARKING LINE EPOXY 4-INCH (YELLOW)
 - ② MARKING LINE EPOXY 4-INCH (DOUBLE YELLOW)
 - ③ MARKING CROSSWALK EPOXY BLOCK 24-INCH (WHITE)
 - ④ MARKING STOP LINE EPOXY 18-INCH (WHITE)
 - ⑤ MARKING LINE EPOXY 10-INCH (WHITE)
 - ⑥ MARKING ISLAND NOSE EPOXY

- SIGNING NOTES:**
1. WHEN AN EXISTING STOP SIGN AND SUPPORT IS TO BE REMOVED AND A NEW STOP SIGN AND SUPPORT ERRECTED, THE WORK SHALL BE DONE CONCURRENTLY.
 2. POST SIZES, FOR TYPE II SIGNING, ARE ESTIMATED LENGTHS AND THE ACTUAL LENGTH WILL BE DETERMINED IN THE FIELD.

(**) = SEE CONSTRUCTION DETAIL (SHEET 11) FOR PARKING STALL MARKINGS

(**) REFERENCE LIGHTING PLAN SHEET 80 & CONSTRUCTION DETAIL ON SHEET 11 FOR ADDITIONAL INFORMATION ON RRFBs

(*) = SEE CONSTRUCTION DETAIL (SHEET 11) FOR PARKING STALL MARKINGS

McMAHON
McMAHON ASSOCIATES, INC.
1445 McMAHON DRIVE WEEHAW, WI 54986
Mailing: P.O. BOX 1026 WEEHAW, WI 54987-1025
PH 920.751.4200 FAX 920.751.4284 MCMGRP.COM

DESIGNED: _____ DRAWN: _____
PROJECT NO. 00006 08-23-00501
DATE 2026
SHEET NO. 83R

CTH JJ (OLD STH 15) RECONSTRUCTION
VILLAGE OF HORTONVILLE, OUTAGAMIE COUNTY, WI
SIGNING & PAVEMENT MARKING

I:\projects\00006\082300501\CADD\Civil3D\Plan_Sheets\CTH JJ_Downtown\CTH JJ_DT_MQ_Sheets.dwg, 12_Plot_Date: 3/4/2026 10:54 AM, xref:stone

SIGNING (CONTINUED)

Addendum No. 1
CTH JJ Reconstruction
March 6, 2026
Revised Sheet

STATION	LOCATION	SIGN CODE	SIZE		S.F.	EACH	EACH	EACH	EACH	EACH	EACH	REMARKS
			W	X H								
64+32 LT	CTH JJ	D4-51R	24"	X 24"	-	1	-	-	-	-	-	* PARKING RIGHT ARROW
64+53 LT	CTH JJ	W11-2	30"	X 30"	-	1	-	-	-	-	-	PEDESTRIAN CROSSING
64+53 LT	CTH JJ	S16-7L	24"	X 12"	-	1	-	-	-	-	-	LEFT DIAGONAL DOWNWARD POINTING ARROW
64+76 LT	CTH JJ	M3-4	24"	X 12"	-	1	-	1	-	-	-	WEST
64+76 LT	CTH JJ	M1-5A	24"	X 24"	-	1	-	-	-	-	-	* STATE ROUTE MARKER
64+90 RT	CTH JJ	R7-2D	18"	X 24"	-	1	-	-	-	-	-	* NO PARKING 3AM-6AM
64+90 RT	CTH JJ	R7-5D	18"	X 24"	-	1	-	-	-	-	-	* 2 HOUR PARKING
65+84 LT	CTH JJ	R7-5D	18"	X 24"	-	1	-	-	1	-	-	* 2 HOUR PARKING
65+84 LT	CTH JJ	R7-2D	18"	X 24"	-	1	-	-	-	-	-	* NO PARKING 3AM-6AM
66+05 RT	CTH JJ	M1-5A	24"	X 24"	-	1	-	1	-	-	-	* COUNTY MARKER
66+05 RT	CTH JJ	M6-4	21"	X 21"	-	1	-	-	1	-	-	* DIRECTIONAL ARROWS LEFT-RIGHT
66+06 RT	CTH JJ	R1-1	30"	X 30"	6.25	-	1	-	1	-	-	STOP SIGN
66+06 RT	CTH JJ	R1-3P	18"	X 6"	0.75	-	-	-	-	-	-	ALL WAY
66+96 LT	CTH JJ	R1-1	30"	X 30"	6.25	-	1	-	1	-	-	STOP SIGN
66+96 LT	CTH JJ	R1-3P	18"	X 6"	0.75	-	-	-	-	-	-	ALL WAY
66+96 LT	CTH JJ	M1-5A	24"	X 24"	-	1	-	-	1	-	-	* COUNTY MARKER
66+96 LT	CTH JJ	M6-4	21"	X 21"	-	1	-	-	-	-	-	* DIRECTIONAL ARROWS LEFT-RIGHT
67+05 LT	CTH JJ	W11-2	30"	X 30"	6.25	-	-	-	1	-	-	PEDESTRIAN CROSSING
67+87 LT	CTH JJ	R7-51L	18"	X 24"	-	1	-	-	-	-	-	NO PARKING HERE TO CORNER
67+87 LT	CTH JJ	DR1-53L	30"	X 8"	-	1	-	-	-	-	-	MEDINA LEFT ARROW
69+72 LT	CTH JJ	R3-5L	42"	X 48"	-	-	1	-	-	-	-	LEFT ONLY
69+72 LT	CTH JJ	R3-6R	42"	X 48"	-	-	1	-	-	-	-	STRAIGHT THROUGH, RIGHT TURN
50+35 LT	CTH M/ N. NASH ST	R1-1	30"	X 30"	6.25	-	1	-	1	-	-	STOP SIGN
50+35 LT	CTH M/ N. NASH ST	R1-3P	18"	X 6"	0.75	-	-	-	-	-	-	ALL WAY
50+44 LT	CTH M/ N. NASH ST	W11-2	30"	X 30"	-	1	-	-	-	-	-	PEDESTRIAN CROSSING
50+44 LT	CTH M/ N. NASH ST	S16-7L	24"	X 12"	-	1	-	-	-	-	-	LEFT DIAGONAL DOWNWARD POINTING ARROW
50+75 RT	CTH M/ N. NASH ST	R1-1	30"	X 30"	6.25	-	-	-	1	-	-	STOP SIGN
50+79 RT	CTH M/ N. NASH ST	S1-1	36"	X 36"	-	1	-	-	-	-	-	SCHOOL ADVANCE
50+79 RT	CTH M/ N. NASH ST	R2-6P	24"	X 18"	-	1	-	-	-	-	-	FINES HIGHER
50+79 RT	CTH M/ N. NASH ST	W16-9P	24"	X 12"	-	1	-	-	-	-	-	AHEAD
50+66 RT	CTH M/ N. NASH ST	W11-2	30"	X 30"	6.25	-	-	-	1	-	-	PEDESTRIAN CROSSING
51+01 RT	CTH M/ S. NASH ST	R1-1	30"	X 30"	6.25	-	1	-	1	-	-	STOP SIGN
51+01 RT	CTH M/ S. NASH ST	R1-3P	18"	X 6"	0.75	-	-	-	-	-	-	ALL WAY
50+98 RT	CTH M/ S. NASH ST	S1-1	36"	X 36"	-	1	-	-	-	-	-	SCHOOL ADVANCE
50+98 RT	CTH M/ S. NASH ST	S16-L	24"	X 12"	-	1	-	-	-	-	-	LEFT DIAGONAL DOWNWARD POINTING ARROW

PROJECT TOTALS	47.5	61	7	24	25	2	1
----------------	------	----	---	----	----	---	---

TRAFFIC CONTROL			
	SPV.0105.01 REMOVE AND SALVAGE TRAFFIC SIGNALS CTH JJ (W. MAIN STREET) AND CTH M/ NASH STREET	SPV.0105.02 TRAFFIC CONTROL	SPV.0105.03 TRAFFIC CONTROL DETOUR
PROJECT	L.S.	L.S.	L.S.
CTH JJ	1	1	1
PROJECT TOTALS	1	1	1

SALVAGE PAVER BRICKS		
STATION	LOCATION	SF
69+30 LT.	CTH JJ	25
PROJECT TOTAL		25



McMahon Associates, Inc. provides
of form: as instruments of
copyrights are retained by
McMahon Associates, Inc. The
the latest extent permitted by
McMahon Associates, Inc.
McMahon Associates, Inc.
1445 McMAHON DRIVE WENAH, WI 54986
Mailing: P.O. BOX 1025 WENAH, WI 54987-0025
PH 920.751.4200 FAX 920.751.4284 MCINGR.COM

NO.	DATE	REVISION
1	3/4/26	SIGN ADDITIONS (R1-3P ALL WAY)

CTH JJ (OLD STH 15) RECONSTRUCTION
VILLAGE OF HORTONVILLE, OUTAGAMIE COUNTY, WI
MISCELLANEOUS QUANTITIES

DESIGNED	DRAWN
-	-
PROJECT NO. 00006 08-23-00501	
DATE 2026	
SHEET NO. 107R	

I:\Projects\0006\082300501\CADD\Civil3D\Plan_Sheets\CTH JJ_Downtown\CTH JJ_DT_MQ_Sheets.dwg 13_Plot Date: 3/4/2026 10:54 AM xref:stone

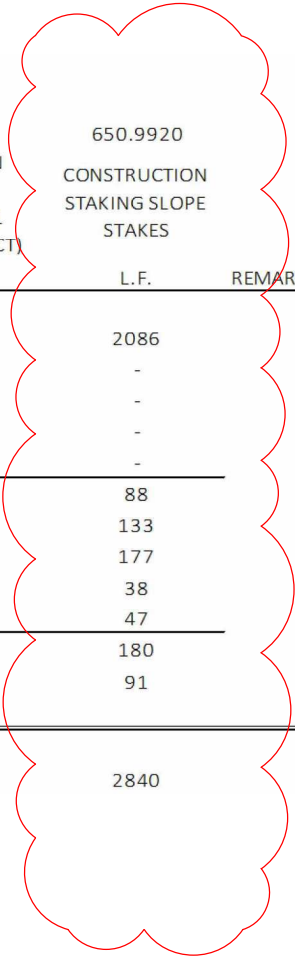
PAVEMENT MARKING EPOXY

STATION TO STATION	LOCATION	646.1020 MARKING LINE EPOXY 4 INCH (Yellow) L.F.	646.6120 MARKING STOP LINE EPOXY 18-INCH L.F.	646.4020 MARKING LINE EPOXY 10 INCH (White) L.F.	646.7520 MARKING CROSSWALK EPOXY BLOCK STYLE 24-INCH L.F.	646.8220 MARKING ISLAND NOSE EPOXY EACH	646.8320 MARKING PARKING STALL EPOXY (White) L.F.	646.9000 MARKING REMOVAL LINE 4 INCH L.F.
49+14.43 - 70+00	CTH JJ	3765	66	146	312	-	450	20
30+37 - 31+25	CHERRY ST	-	16	-	48	-	-	10
35+37 - 36+70	BRIGGS ST	-	16	-	54	-	-	10
40+30 - 43+70	MILL ST	-	32	-	114	-	-	20
45+33 - 45+80	PINE ST	-	-	-	36	-	-	-
49+30 - 51+10	CTH M/ S. NASH ST	363	14	-	60	-	-	10
50+25 - 51+16	CTH M/ N. NASH ST	169	14	-	84	3	-	10
	UNDISTRIBUTED	-	-	-	-	-	-	-
PROJECT TOTALS		4297	158	146	708	3	450	80

Addendum No. 1
CTH JJ Reconstruction
March 6, 2026
Revised Sheet

ROADWAY STAKING

STATION TO STATION	LOCATION	650.4500 CONSTRUCTION STAKING SUBGRADE L.F.	650.5000 CONSTRUCTION STAKING BASE L.F.	650.5500 CONSTRUCTION STAKING CURB & GUTTER L.F.	650.7000 CONSTRUCTION STAKING CONCRETE PAVEMENT L.F.	650.8501 CONSTRUCTION STAKING ELECTRICAL INSTALLATIONS (PROJECT) EACH	650.9000 CONSTRUCTION STAKING CURB RAMPS EACH	650.9500 CONSTRUCTION STAKING SIDEWALK (PROJECT) EACH	650.9911 CONSTRUCTION STAKING SUPPLEMENTAL CONTROL (PROJECT) EACH	650.9920 CONSTRUCTION STAKING SLOPE STAKES L.F.	REMARKS
49+14.43 - 70+00	CTH JJ	2086	2086	4116	-	1	-	1	1	2086	
49+14.43 - 60+00	CTH JJ	-	-	-	-	-	2	-	-	-	
60+00 - 62+00	CTH JJ	-	-	-	-	-	4	-	-	-	
62+00 - 65+00	CTH JJ	-	-	-	-	-	2	-	-	-	
65+00 - 70+00	CTH JJ	-	-	75	-	-	4	-	-	-	
30+37 - 31+25	CHERRY ST	88	88	185	-	-	2	-	-	88	
35+37 - 36+70	BRIGGS ST	133	133	540	-	-	2	-	-	133	
40+30 - 42+07	MILL ST	177	177	375	-	-	-	-	-	177	
42+87 - 43+25	MILL ST	38	38	80	-	-	-	-	-	38	
45+33 - 45+80	PINE ST	47	47	110	-	-	2	-	-	47	
49+30 - 51+10	CTH M/ S. NASH ST	180	180	230	60	-	1	-	-	180	
50+25 - 51+16	CTH M/ N. NASH ST	91	91	120	-	-	4	-	-	91	
PROJECT TOTALS		2840	2840	5831	60	1	23	1	1	2840	



RRFB SUMMARY

RRFB	STATION	LOCATION	EACH	EACH	NOTES
RRFB 1	64+53, 24.00' LT.	CTH JJ	1	1	CTH JJ and PINE STREET
RRFB 2	64+33, 23.25' RT.	CTH JJ	1	1	CTH JJ and PINE STREET
PROJECT TOTALS			2	2	



McMahon Associates, Inc. provides this information as a service to its clients. The information is not to be used for any purpose other than that intended. The user assumes all liability for any use of the information. McMahon Associates, Inc. is not responsible for any errors or omissions in this information. McMahon Associates, Inc. is not responsible for any damage to property or equipment caused by the use of this information. McMahon Associates, Inc. is not responsible for any loss of data or information. McMahon Associates, Inc. is not responsible for any delay in the completion of any project. McMahon Associates, Inc. is not responsible for any other consequences of the use of this information.

NO.	DATE	REVISION
1	3/4/26	SIGN ADDITIONS (R1-3P ALL WAY)

**CTH JJ (OLD STH 15) RECONSTRUCTION
VILLAGE OF HORTONVILLE, OUTAGAMIE COUNTY, WI
MISCELLANEOUS QUANTITIES**

DESIGNED	DRAWN
-	-
PROJECT NO. 00006 08-23-00501	
DATE 2026	
SHEET NO. 108R	

Attachment E - DNR NOI Permit

State of Wisconsin
DEPARTMENT OF NATURAL RESOURCES
Northeast Region Headquarters
2984 Shawano Ave
Green Bay, WI 54313-6727

Tony Evers, Governor
Karen Hyun, Ph.D., Secretary
Telephone 920-662-5100
Toll Free 1-888-936-7463
TTY Access via relay - 711



March 2, 2026

Michael Morman
Outagamie County
320 S Walnut St
Appleton WI 54911
Via email: michael.morman@outagamie.org

SUBJECT: Coverage Under WPDES General Permit No. WI-S067831-06: Construction Site Storm Water Runoff
Permittee Name: Outagamie County Site
Site Name: CTH JJ (Old STH 15) Reconstruction
FIN: 103532

Dear Permittee:

The Wisconsin Department of Natural Resources received your Water Resources Application for Project Permits or Notice of Intent, on February 17, 2026, for the CTH JJ (Old STH 15) Reconstruction site and has evaluated the information provided regarding storm water discharges from your construction site. We have determined that your construction site activities will be regulated under ch. 283, Wis. Stats., ch. NR 216, Wis. Adm. Code, and in accordance with Wisconsin Pollutant Discharge Elimination System (WPDES) General Permit No. WI-S067831-06, Construction Site Storm Water Runoff. All erosion control and storm water management activities undertaken at the site must be done in accordance with the terms and conditions of the general permit.

The **Start Date** of permit coverage for this site is March 02, 2026. The maximum period of permit coverage for this site is limited to 3 years from the **Start Date**. Therefore, permit coverage automatically expires and terminates 3 years from the Start Date and storm water discharges are no longer authorized unless another Notice of Intent and application fee to retain coverage under this permit or a reissued version of this permit is submitted to the Department 14 working days prior to expiration.

A copy of the general permit along with extensive storm water information including technical standards, forms, guidance and other documents is accessible on the Department's storm water program Internet site. To obtain a copy of the general permit, please download it and the associated documents listed below from the following Department Internet site:

<http://dnr.wi.gov/topic/stormwater/construction/forms.html>

- Construction Site Storm Water Runoff WPDES general permit No. WI-S067831-06
- Construction site inspection report form
- Notice of Termination form

If, for any reason, you are unable to access these documents over the Internet, please contact me and I will send them to you.

To ensure compliance with the general permit, please read it carefully and be sure you understand its contents. Please take special note of the following requirements (This is not a complete list of the terms and conditions of the general permit.):

1. The Construction Site Erosion Control Plan and Storm Water Management Plan that you completed prior to submitting your permit application must be implemented and maintained throughout construction. Failure to do so may result in enforcement action by the Department.

2. Construction dewatering discharges from an area subject to remedial action operations or from an area containing contamination that would be subject to remedial action operations are not eligible for coverage under this permit (section 1.1.2.3). Discharges may be eligible for coverage under the [Contaminated Groundwater from Remedial Action Operations General Permit \(WI-0046566-07-0\)](#).

3. The general permit requires that erosion and sediment controls be routinely inspected at least every 7 days, and within 24 hours after a rainfall event of 0.5 inches or greater. Weekly written reports of all inspections must be maintained. The reports must contain the following information:

- a. Date, time, and exact place of inspection;
- b. Name(s) of individual(s) performing inspection;
- c. An assessment of the condition of erosion and sediment controls;
- d. A description of any erosion and sediment control implementation and maintenance performed;
- e. A description of the site's present phase of construction.

4. A **Certificate of Permit Coverage** must be posted in a conspicuous place on the construction site. The Certificate of Permit Coverage (WDNR Publication # WT-813) is enclosed for your use.

5. When construction activities have ceased and the site has undergone final stabilization, a Notice of Termination (NOT) of coverage under the general permit must be submitted to the Department.

It is important that you read and understand the terms and conditions of the general permit because they have the force of law and apply to you. Your project may lose its permit coverage if you do not comply with its terms and conditions. The Department may also withdraw your project from coverage under the general permit and require that you obtain an individual WPDES permit instead, based on the Department's own motion, upon the filing of a written petition by any person, or upon your request.

If you believe that you have a right to challenge this decision to grant permit coverage, you should know that the Wisconsin statutes and administrative rules establish time periods within which requests to review Department decisions must be filed. For judicial review of a decision pursuant to ss. 227.52 and 227.53, Wis. Stats., you have 30 days after the decision is mailed, or otherwise served by the Department, to file your petition with the appropriate circuit court and serve the petition on the Department. Such a petition for judicial review must name the Department of Natural Resources as the respondent.

To request a contested case hearing pursuant to s. 227.42, Wis. Stats., you have 30 days after the decision is mailed, or otherwise served by the Department, to serve a petition for hearing on the Secretary of the Department of Natural Resources. All requests for contested case hearings must be made in accordance with s. NR 2.05(5), Wis. Adm. Code, and served on the Secretary in accordance with s. NR 2.03, Wis. Adm. Code. The filing of a request for a contested case hearing is not a prerequisite for judicial review and does not extend the 30-day period for filing a petition for judicial review.

Thank you for your cooperation with the Construction Site Storm Water Discharge Permit Program. If you have any questions concerning the contents of this letter or the general permit, please contact Sarah Anderson at (920) 662-5441.

Sincerely,



Sarah Anderson
Northeast Region
Storm Water Management Specialist

ENCLOSURE: Certificate of Permit Coverage



CERTIFICATE OF PERMIT COVERAGE

UNDER THE WPDES CONSTRUCTION SITE STORM WATER RUNOFF PERMIT Permit No. WI-S067831-06

Under s. NR 216.455(2), Wis. Adm. Code, landowners of construction sites with storm water discharges regulated by the Wisconsin Department of Natural Resources (WDNR) Storm Water Permit Program are required to post this certificate in a conspicuous place at the construction site. This certifies that the site has been granted WDNR storm water permit coverage. The landowner must implement and maintain erosion control practices to limit sediment-contaminated runoff to waters of the state in accordance with the permit.

EROSION CONTROL COMPLAINTS should be reported to the WDNR Tip Line at **1-800-TIP-WDNR (1-800-847-9367)**

Please provide the following information to the Tip Line:

WDNR Site No. (FIN): 103532

Site Name: CTH JJ (Old STH 15) Reconstruction

Address/Location: W Main Street (CTH JJ) in Downtown Hortonville, Village of HORTONVILLE

Additional Information:

Landowner: Outagamie County Site

Landowner's Contact Person: Michael Morman

Contact Telephone Number: (920) 832-8573

Permit Start Date: March 02, 2026

By: 