

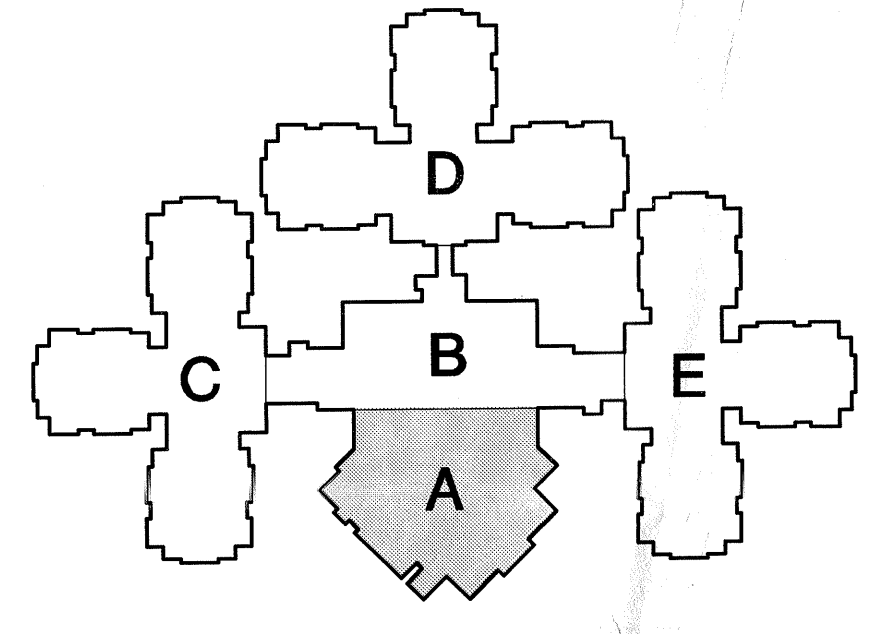


GENERAL NOTES:

- PROVIDE CONDUIT, CABLES AND CONNECTIONS TO ALL DOOR OPERATOR COMPONENTS.
- COORDINATE ALL BACKBOX ROUGH-INS WITH CASEWORK ELEVATIONS.
- ALL BRANCH CIRCUITS LONGER THAN 100 FT SHALL HAVE TWO CONDUCTORS.
- SEE SPEC SECTION 16.00 REGARDING FIRE ALARM CONNECTIONS TO SMOKE CHAMBERS LOCATIONS. VERIFY LOCATIONS WITH DIVISION 9 DRAWINGS.
- COORDINATE HOOK-UP OF TYPICAL DOOR CONTROL LOCATIONS WITH ARCHITECT.

KEY NOTES:

- ▽ 3/4" x 4" x 8" TELEPHONE BOARD WITH 1/4" x 4" x 4" GROUND BAR.
- ▽ NURSE CALL MAIN RECEIVER (NCM-2 AND PCL) SEE SPEC SECTION 16.113. VERIFY EXACT LOCATION.
- ▽ PROVIDE 6" x 8" BACKBOX IN WALL 1/4"-3/4" CONDUIT STUBBED TO CEILING SPACE.
- ▽ SECURITY SYSTEM VIDEO BADGING/WORK STATION PC. SEE SPEC SECTION 16.099. VERIFY EXACT LOCATION.
- ▽ RESIDENT SECURITY SYSTEM DOOR CONTROLLER (DC) AND ANTENNA. SEE SPEC SECTION 16.101. VERIFY ANTENNA IN CEILING SPACE. SURFACE MOUNT ANTENNA THIS LOCATION TO REPORT TO ARCH. CONTROLLER/ANNUNCIATORS AT ALL NEIGHBORHOODS.
- ▽ ELECTRONIC LOCK SYSTEMS/LOCK POWER SUPPLY. SEE SPEC SECTION 16.011. VERIFY CONNECTION TO ALL PULL LOCKS LOCATED IN TOWN CENTER COMMONS (LOCATIONS NOT COVERED BY NEIGHBORHOOD PROVISIONS). MAXIMUM OF 10 MAG LOCKS PER POWER SUPPLY.
- ▽ SECURITY SYSTEM INTELLIGENT SYSTEM CONTROLLER (ISC). SEE SPEC SECTION 16.012. VERIFY CONNECTION TO ALL PULL LOCKS LOCATED IN TOWN CENTER COMMONS (LOCATIONS NOT COVERED BY NEIGHBORHOOD PROVISIONS). MAXIMUM OF 10 PULL LOCKS PER ISC. VERIFY CONNECTION TO EMERGENCY CIRCUIT INDICATED.
- ▽ EMERGENCY CIRCUITRY FOR ELECTROLINE PROVIDED EQUIPMENT. VERIFY EXACT LOCATION.
- ▽ PROVIDE GAS AND PHONE CONNECTION TO GAS METER PURNISH INSTALLED BY DIV. 5.



HORTY ELVING & ASSOCIATES, INC.
 PLANNERS-ARCHITECTS-ENGINEERS-INTERIOR DESIGNERS
 825 EAST GRANT STREET-MINNEAPOLIS, MN 55404 (612) 332-4122

BCI BUSSELL COMPANIES, INC.
 BUSSELL ENGINEERING
 16026 MINNETONKA BOULEVARD STE 100
 MINNETONKA, MN 55345
 (952) 931-2111
 (952) 931-1222

NEW HEALTH CARE FACILITY - PHASE 3B
 Outagamie County Health Center
 Appleton, Wisconsin

COPYRIGHT 2000
 HORTY, ELVING & ASSOCIATES, INC.

Drawn By **DOB** Checked By **DOB**

I hereby certify that this plan, specification, or report was prepared by me or under my direct supervision and that I am a duly Licensed Professional Engineer under the laws of the State of Wisconsin.

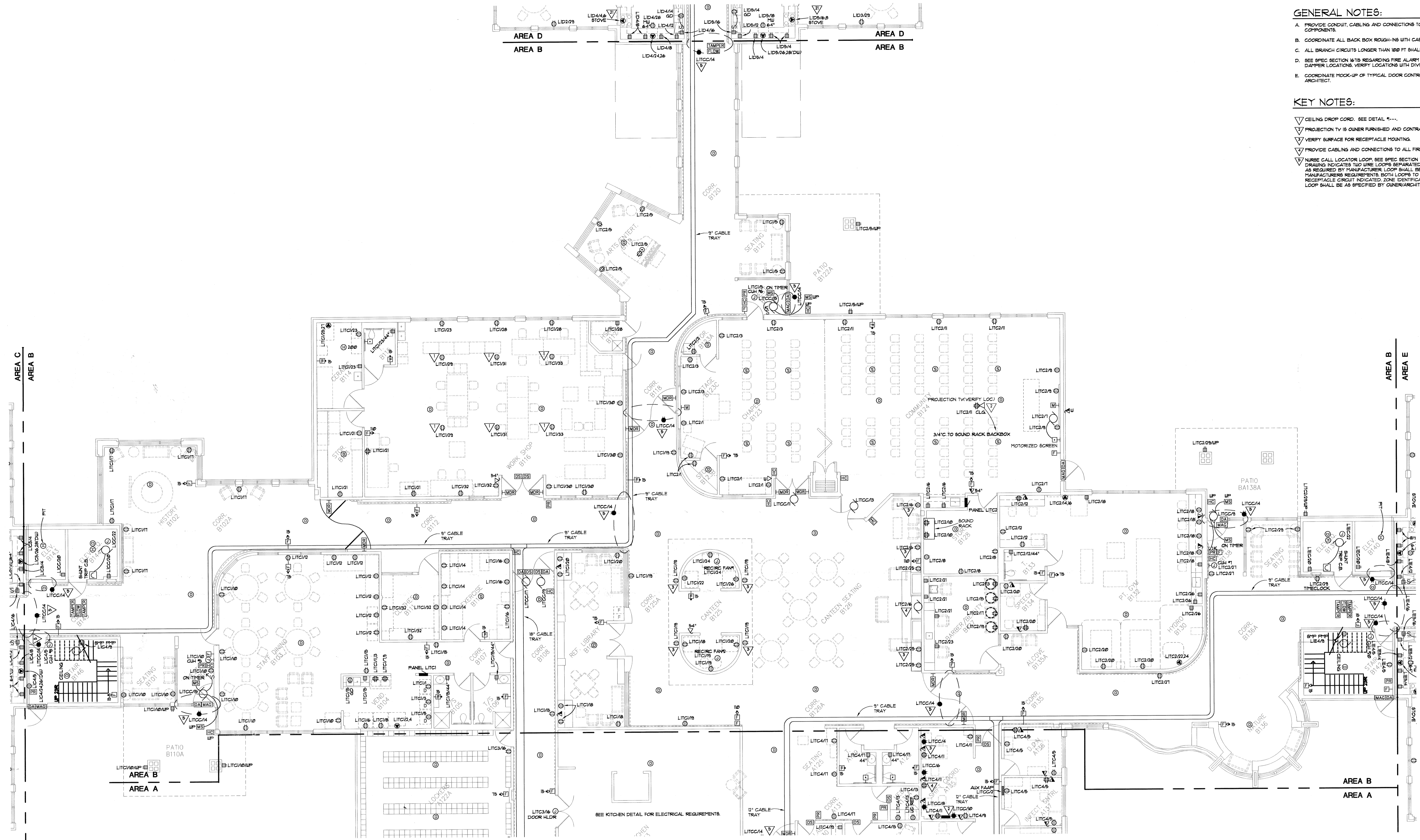
Dennis D. Busell Registration No. E-30286

Date _____

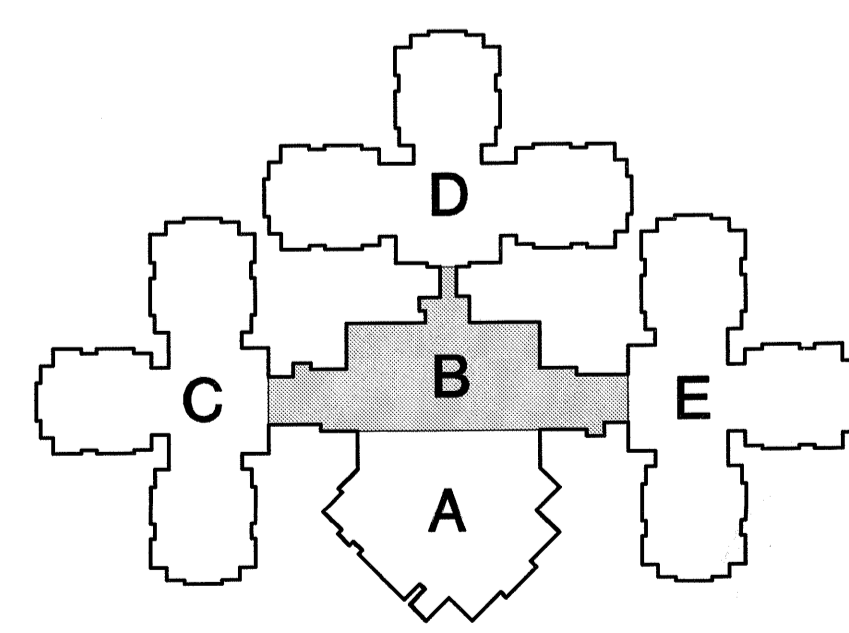
ELECTRICAL POWER & AUXILIARY SYSTEMS
 LEVEL 1 - AREA A

Scale **1/8"=1'-0"** Date **8/11/00** Project Number **09169**

a/1 **E-1**



- GENERAL NOTES:**
- PROVIDE CONDUIT, CABLING AND CONNECTIONS TO ALL DOOR OPERATOR COMPONENTS.
 - COORDINATE ALL BACK BOX ROUGH-INS WITH CASEWORK ELEVATIONS.
 - ALL BRANCH CIRCUITS LONGER THAN 100 FT SHALL BE #8 CONDUCTORS.
 - SEE SPEC SECTION #179 REGARDING FIRE ALARM CONNECTIONS TO SMOKE DAMPER LOCATIONS. VERIFY LOCATIONS WITH DIVISION 9 DRAWINGS.
 - COORDINATE MOCK-UP OF TYPICAL DOOR CONTROL LOCATIONS WITH ARCHITECT.
- KEY NOTES:**
- ▽ CEILING DROP CORD. SEE DETAIL 1-1-1.
 - ▽ PROJECTION TV IS OWNER FURNISHED AND CONTRACTOR INSTALLED.
 - ▽ VERIFY SURFACE FOR RECEIPTABLE MOUNTING.
 - ▽ PROVIDE CABLING AND CONNECTIONS TO ALL FIREPLACE COMPONENTS.
 - ▽ NURSE CALL LOCATOR LOOP. SEE SPEC SECTION #173. DASHED LINE ON DRAWING INDICATES TWO WIRE LOOPS SEPARATED BY A MINIMUM DISTANCE AS REQUIRED BY MANUFACTURER. LOOP SHALL BE INSTALLED PER MANUFACTURER'S REQUIREMENTS. BOTH LOOPS TO BE POWERED BY RECEPTACLE CIRCUIT INDICATED. ZONE IDENTIFICATION ON EITHER SIDE OF LOOP SHALL BE AS SPECIFIED BY OWNER/ARCHITECT.



HORTY ELVING & ASSOCIATES, INC.

BCI BUSSELL COMPANIES, INC.
 16026 MINNETONKA BOULEVARD STE 100
 MINNETONKA, MN 55345

COPYRIGHT 2000
 HORTY, ELVING & ASSOCIATES, INC.

NEW HEALTH CARE FACILITY - PHASE 3B
 Outagamie County Health Center
 Appleton, Wisconsin

I hereby certify that this plan, specification, or report was prepared by me or under my direct supervision and that I am a duly Licensed Professional Engineer under the laws of the State of Wisconsin.
 Dennis D. Buswell Registration No. E-3260

ELECTRICAL POWER & AUXILIARY SYSTEMS LEVEL 1 - AREA B

a/1 E-2

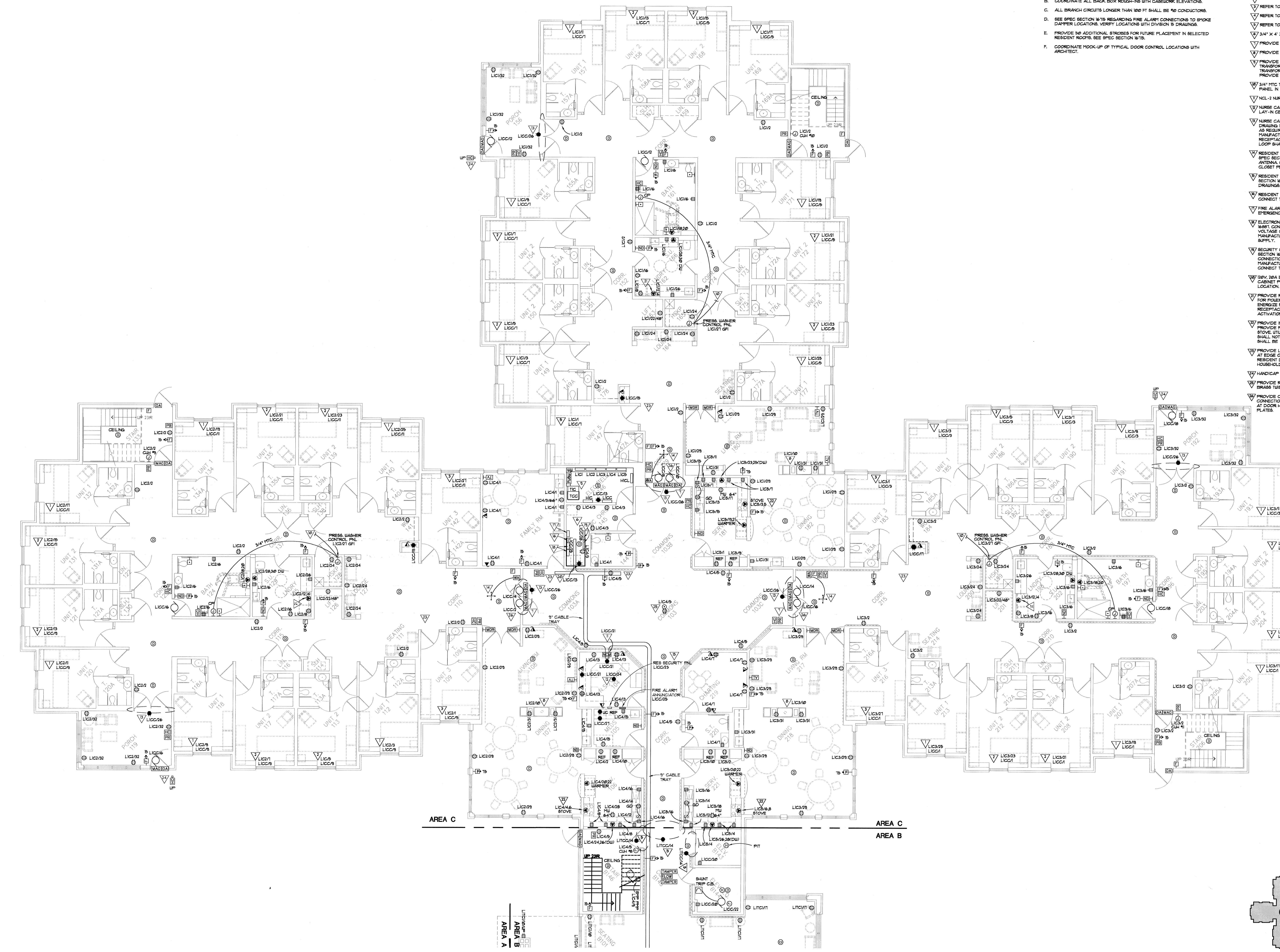
Drawn By **DDB** Checked By **DDB** Date _____ Scale **1/8"=1'-0"** Date **8/11/00** Project Number **09169**

GENERAL NOTES:

- A. PROVIDE CONDUIT, CABLING AND CONNECTIONS TO ALL DOOR OPERATOR COMPONENTS.
- B. COORDINATE ALL BACK BOX ROUGH-IN WITH CASEWORK ELEVATIONS.
- C. ALL BRANCH CIRCUITS LONGER THAN 100 FT SHALL BE NO CONDUCTORS.
- D. SEE SPEC SECTION 1678 REGARDING FIRE ALARM CONNECTIONS TO SMOKE DAMPER LOCATIONS. VERIFY LOCATIONS WITH DIVISION B DRAWINGS.
- E. PROVIDE 50 ADDITIONAL BRANCHES FOR FUTURE PLACEMENT IN SELECTED RESIDENT ROOMS. SEE SPEC SECTION 1678.
- F. COORDINATE HOOK-UP OF TYPICAL DOOR CONTROL LOCATIONS WITH ARCHITECT.

KEY NOTES:

- ▽ REFER TO DRAWING E-84 FOR TYPICAL UNIT 1.
- ▽ REFER TO DRAWING E-84 FOR TYPICAL UNIT 2.
- ▽ REFER TO DRAWING E-84 FOR TYPICAL UNIT 3.
- ▽ REFER TO DRAWING E-84 FOR TYPICAL UNIT 4.
- ▽ REFER TO DRAWING E-84 FOR TYPICAL UNIT 5.
- ▽ 3/4" X 4" X 8" TELEPHONE BOARD WITH 1/4" X 4" X 4" GROUND BOX.
- ▽ PROVIDE OVERRIDE SWITCH AT NURSES STATION.
- ▽ PROVIDE CABLING AND CONNECTIONS TO ALL FIREPLACE COMPONENTS.
- ▽ PROVIDE UNISTUT FRAMING SET 200VA TRANSFORMER ABOVE 225 KVA TRANSFORMER. ALLOW 1 FT CLEARANCE BETWEEN TOP OF 225 KVA TRANSFORMER AND CEILING.
- ▽ PROVIDE UNISTUT BELOW PANELBOARDS AS INDICATED ON SHIT E-2.
- ▽ 3/4" HTG TO SECOND FLOOR LOW VOLTAGE PRESSURE WASHER CONTROL PANEL IN BATHING ROOM.
- ▽ NCL-1 NURSE CALL NEIGHBORHOOD RECEIVER. SEE SPEC SECTION 1673.
- ▽ NURSE CALL WIRELESS PHONE LOCAL RECEIVER MOUNT DEVICE ABOVE LAY-IN CEILING. SEE SPEC SECTION 1673.
- ▽ NURSE CALL LOCATOR LOOP. SEE SPEC SECTION 1673. DASHED LINE ON DRAWING INDICATES TWO WIRE LOOPS SEPARATED BY A MINIMUM DISTANCE AS REQUIRED BY MANUFACTURER. LOOP SHALL BE INSTALLED PER MANUFACTURER REQUIREMENTS. BOTH LOOPS TO BE POWERED BY RECEPTACLE CIRCUIT INDICATED. ZONE IDENTIFICATION ON EITHER SIDE OF LOOP SHALL BE AS SPECIFIED BY OWNER/ARCHITECT.
- ▽ RESIDENT SECURITY SYSTEM DOOR CONTROLLER "UA" AND ANTENNA. SEE SPEC SECTION 1678. MOUNT "UA" IN CEILING SPACE. SURFACE MOUNT ANTENNA. CONNECT "UA" TO APX2 CONTROLLER IN COMMUNICATIONS CLOSET PER MANUFACTURERS DRAWINGS.
- ▽ RESIDENT SECURITY SYSTEM APX2 (RECEIVED) ANNUNCIATOR. SEE SPEC SECTION 1678. CONNECT TO APX2 CONTROLLER PER MANUFACTURERS DRAWINGS. BACKBOX FURNISHED BY VENDOR.
- ▽ RESIDENT SECURITY SYSTEM APX2 CONTROLLER. SEE SPEC SECTION 1678. CONNECT TO DEV EMERGENCY SOURCE INDICATED.
- ▽ FIRE ALARM NAC CONTROLLER. SEE SPEC SECTION 1678. CONNECT TO EMERGENCY CIRCUIT INDICATED.
- ▽ ELECTRONIC LOCK SYSTEM MAG LOCK POWER SUPPLY. SEE SPEC SECTION 1681. CONNECT TO EMERGENCY CIRCUIT INDICATED. PROVIDE LOW VOLTAGE CABLING TO ALL MAG LOCKS THIS NEIGHBORHOOD PER MANUFACTURERS DRAWINGS. MAXIMUM OF 10 TAG LOOPS PER POWER SUPPLY.
- ▽ SECURITY SYSTEM INTELLIGENT SYSTEM CONTROLLER (ISC). SEE SPEC SECTION 1681. PROVIDE TWO UNITS PER NEIGHBORHOOD. PROVIDE CONNECTION TO ALL NEIGHBORHOOD PROXIMITY READERS PER MANUFACTURERS DRAWINGS. MAXIMUM OF 10 PROXIMITY READERS PER ISC. CONNECT TO EMERGENCY CIRCUIT INDICATED.
- ▽ DEV 10A EMERGENCY CIRCUIT FOR POWER TO DATA/COMMUNICATIONS CABINET PROVIDED BY ELECTROLINE. COORDINATE RECEPTACLE LOCATION.
- ▽ PROVIDE RELAY IN J-BOX UPSTREAM ADJACENT TO DRYER RECEPTACLE FOR POWER TO JAMHP DRYER BOOSTER FAN LOCATED ABOVE DRYER. ENERGIZE FAN FROM ADJACENT COUNTERTOP NORMAL POWERED RECEPTACLE. GOAL TO GLOBE CONTACTS, ENERGIZING FAN UPON ACTIVATION OF DRYER.
- ▽ PROVIDE IN-LINE CONTACTOR UPSTREAM FROM STOVE RECEPTACLE. PROVIDE PULL-IN COIL LOCATE KEYPAD SWITCH UP/LEFT ADJACENT TO STOVE. UTILIZE CONTACTOR RECEPTACLE FOR CONTROL. POWER STOVE SHALL NOT OPERATE WITHOUT ACTIVATION OF KEYPAD SWITCH. PILOT LIGHT SHALL BE ILLUMINATED WHEN STOVE IS ENABLED.
- ▽ PROVIDE LOW VOLTAGE CABLE BRIDGE RINGS 9" ON CENTER HIGH ON WALL AT EDGE OF EACH CORRIDOR IN HOUSEHOLDS. LOCATE BRIDGE RINGS AT RESIDENT DOOR SIDE OF CORRIDOR MAKING ENTIRE LOOP AROUND HOUSEHOLDS.
- ▽ HANDICAP PUSH/PAD BOLLARD BY GC.
- ▽ PROVIDE RECEIVED FLUSH BRASS RECEPTACLE FLOOR BOX WITH BRASS BRASS TRIST IN COVER TO CONCEAL OUTLET WHEN NOT IN USE.
- ▽ PROVIDE CONDUIT BACK BOXES AND CIRCUITRY INDICATED FOR FUTURE CONNECTION TO DOOR OPERATIONS. TERMINATE CONDUCTORS IN J-BOXES AT DOOR HEADER AND J-BOX AT PUSH PLATE. PROVIDE BLANK COVER PLATES.



HORTY ELVING & ASSOCIATES, INC.
 PLANNERS-ARCHITECTS-ENGINEERS-INTERIOR DESIGNERS
 505 EAST GRANT STREET, MINNEAPOLIS, MN 55404 (612) 331-4422

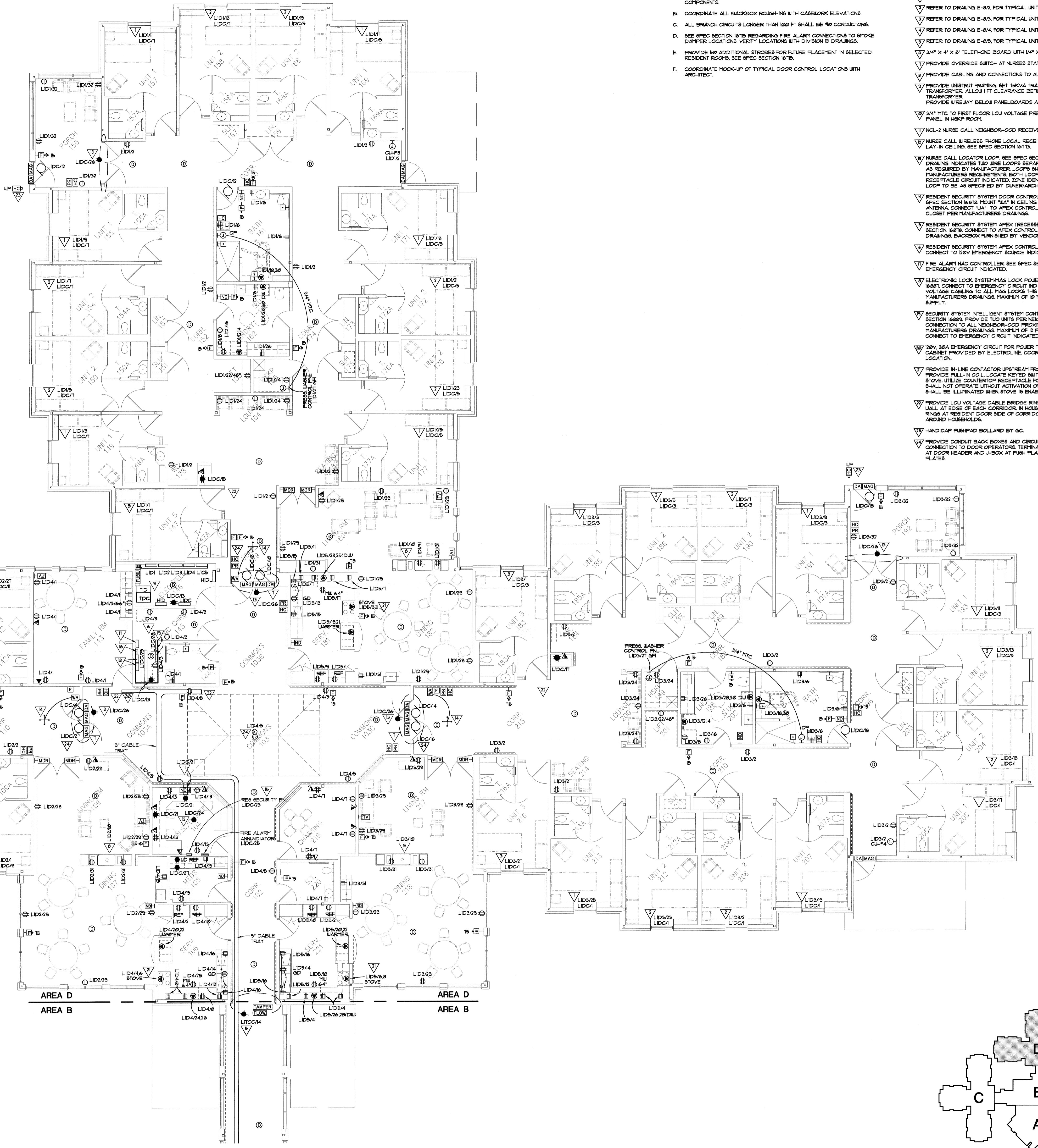
BCI BUSSELL COMPANIES, INC.
 BUSSELL ENGINEERING
 16226 MINNETONKA BOULEVARD STE 100
 MINNETONKA, MN 55345
 952-931-2111
 651-833-1222

NEW HEALTH CARE FACILITY - PHASE 3B
 Outagamie County Health Center
 Appleton, Wisconsin
 COPYRIGHT 2000
 HORTY, ELVING & ASSOCIATES, INC.
 Drawn By **DOB** Checked By **DOB**

I hereby certify that this plan, specification, or report was prepared by me or under my direct supervision and that I am a duly Licensed Professional Engineer under the laws of the State of Wisconsin.
 Dennis D. Busell Registration No. E-31280

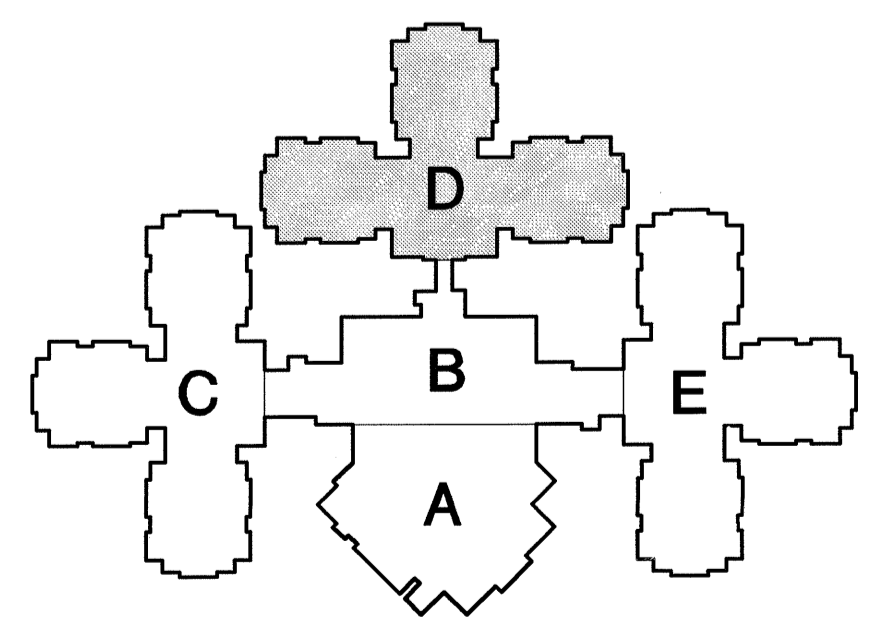
ELECTRICAL POWER & AUXILIARY SYSTEMS LEVEL 1 - AREA C
 Date **8/11/00** Scale **1/8"=1'-0"**

a/1 **E-3**
 Project Number **09169**



- GENERAL NOTES:**
- PROVIDE CONDUIT, CABLES AND CONNECTIONS TO ALL DOOR OPERATOR COMPONENTS.
 - COORDINATE ALL BACKBOX ROUGH-INS WITH CABINETWORK ELEVATIONS.
 - ALL BRANCH CIRCUITS LONGER THAN 100 FT SHALL BE #6 CONDUCTORS.
 - SEE SPEC SECTION #15 REGARDING FIRE ALARM CONNECTIONS TO SMOKE DAMPER LOCATIONS. VERIFY LOCATIONS WITH DIVISION 5 DRAWINGS.
 - PROVIDE 50 ADDITIONAL STROBES FOR FUTURE PLACEMENT IN SELECTED RESIDENT ROOMS. SEE SPEC SECTION #15.
 - COORDINATE MOCK-UP OF TYPICAL DOOR CONTROL LOCATIONS WITH ARCHITECT.

- KEY NOTES:**
- REFER TO DRAWING E-01 FOR TYPICAL UNIT 1.
 - REFER TO DRAWING E-02 FOR TYPICAL UNIT 2.
 - REFER TO DRAWING E-03 FOR TYPICAL UNIT 3.
 - REFER TO DRAWING E-04 FOR TYPICAL UNIT 4.
 - REFER TO DRAWING E-05 FOR TYPICAL UNIT 5.
 - 3/4" X 4" X 8" TELEPHONE BOARD WITH 1/4" X 4" X 4" GROUND BOX.
 - PROVIDE OVERRIDE SWITCH AT NURSES STATION.
 - PROVIDE CABLES AND CONNECTIONS TO ALL FIREPLACE COMPONENTS.
 - PROVIDE UNISTRUT FRAMING, SET TRCVA TRANSFORMER ABOVE 225 KVA TRANSFORMER. ALLOW 1 FT CLEARANCE BETWEEN TOP OF 225 KVA TRANSFORMER AND UNISTRUT FRAMING.
 - PROVIDE WIRING BELOW PANELBOARDS AS INDICATED ON SHEET E-2.
 - 3/4" HTC TO FIRST FLOOR LOW VOLTAGE PRESSURE WASHER CONTROL PANEL IN HALL ROOM.
 - NCL-2 NURSE CALL NEIGHBORHOOD RECEIVER. SEE SPEC SECTION #113.
 - NURSE CALL WIRELESS PHONE LOCAL RECEIVER MOUNT DEVICE ABOVE LAY-IN CEILING. SEE SPEC SECTION #113.
 - NURSE CALL LOCATOR LOOP. SEE SPEC SECTION #113. DASHED LINE ON DRAWING INDICATES TWO WIRE LOOPS SEPARATED BY A MINIMUM DISTANCE AS REQUIRED BY MANUFACTURER. LOOPS SHALL BE INSTALLED PER MANUFACTURER'S REQUIREMENTS. BOTH LOOPS TO BE POWERED BY RECEPTACLE CIRCUIT INDICATED. ZONE IDENTIFICATION ON EITHER SIDE OF LOOP TO BE AS SPECIFIED BY OWNER/ARCHITECT.
 - RESIDENT SECURITY SYSTEM DOOR CONTROLLER "M" AND ANTENNA. SEE SPEC SECTION #148. MOUNT "M" IN CEILING SPACE. SURFACE MOUNT ANTENNA CONNECT "M" TO APEX CONTROLLER IN COMMUNICATIONS CLOSET PER MANUFACTURER'S DRAWINGS.
 - RESIDENT SECURITY SYSTEM APEX (RECEIVED) ANNUNCIATOR. SEE SPEC SECTION #148. CONNECT TO APEX CONTROLLER PER MANUFACTURER'S DRAWINGS. BACKBOX REVIEWED BY VENDOR.
 - RESIDENT SECURITY SYSTEM APEX CONTROLLER. SEE SPEC SECTION #148. CONNECT TO DEV EMERGENCY SOURCE INDICATED.
 - FIRE ALARM NAC CONTROLLER. SEE SPEC SECTION #119. CONNECT TO EMERGENCY CIRCUIT INDICATED.
 - ELECTRONIC LOCK SYSTEM MAG LOCK POWER SUPPLY. SEE SPEC SECTION #149. CONNECT TO EMERGENCY CIRCUIT INDICATED. PROVIDE LOW VOLTAGE CABLE TO ALL MAG LOCKS. THIS NEIGHBORHOOD PER MANUFACTURER'S DRAWINGS. MAXIMUM OF 10 MAG LOCKS PER POWER SUPPLY.
 - SECURITY SYSTEM INTELLIGENT SYSTEM CONTROLLER (ISC). SEE SPEC SECTION #149. PROVIDE TWO UNITS PER NEIGHBORHOOD. PROVIDE CONNECTION TO ALL NEIGHBORHOOD PROXIMITY READERS PER MANUFACTURER'S DRAWINGS. MAXIMUM OF 3 PROXIMITY READERS PER ISC. CONNECT TO EMERGENCY CIRCUIT INDICATED.
 - DEV. 20A EMERGENCY CIRCUIT FOR POWER TO DATA/COMMUNICATION CABINET PROVIDED BY ELECTROLINE. COORDINATE RECEPTACLE LOCATION.
 - PROVIDE N-LINE CONTACTOR UPSTREAM FROM STOVE RECEPTACLE. PROVIDE PULL-IN COIL. LOCATE KEYPAD SWITCH UP/ADJACENT TO STOVE. UTILIZE CONTACTOR RECEPTACLE FOR CONTROL. POWER STOVE SHALL NOT OPERATE WITHOUT ACTIVATION OF KEYPAD SWITCH. PILOT LIGHT SHALL BE ILLUMINATED WHEN STOVE IS DISABLED.
 - PROVIDE LOW VOLTAGE CABLE BRIDGE RINGS 5" ON CENTER HIGH ON WALL AT EDGE OF EACH CORRIDOR IN HOUSEHOLDS. LOCATE BRIDGE RINGS AT RESIDENT DOOR SIDE OF CORRIDOR MAKING ENTIRE LOOP AROUND HOUSEHOLD.
 - HANDICAP PUSH/PAD BOLLARD BY GC.
 - PROVIDE CONDUIT BACK BOXES AND CIRCUITRY INDICATED FOR FUTURE CONNECTION TO DOOR OPERATORS. TERMINATE CONDUCTORS IN J-BOXES AT DOOR HEADER AND J-BOX AT PUSH PLATE. PROVIDE BLANK COVER PLATES.



HORTY ELVING & ASSOCIATES, INC.
 PLANNERS ARCHITECTS ENGINEERS INTERIOR DESIGNERS
 803 EAST GRANT STREET MINNEAPOLIS, MN 55404 (612) 331-4422

BCI BUSSELL COMPANIES, INC.
 BUSSELL ENGINEERING
 16206 MINNETONKA BOULEVARD STE 100
 MINNETONKA, MN 55345
 952-931-2111
 652-931-1222

COPYRIGHT 2000
 HORTY, ELVING & ASSOCIATES, INC.

NEW HEALTH CARE FACILITY - PHASE 3B
 Outagamie County Health Center
 Appleton, Wisconsin

Drawn By **DDB** Checked By **DDB**

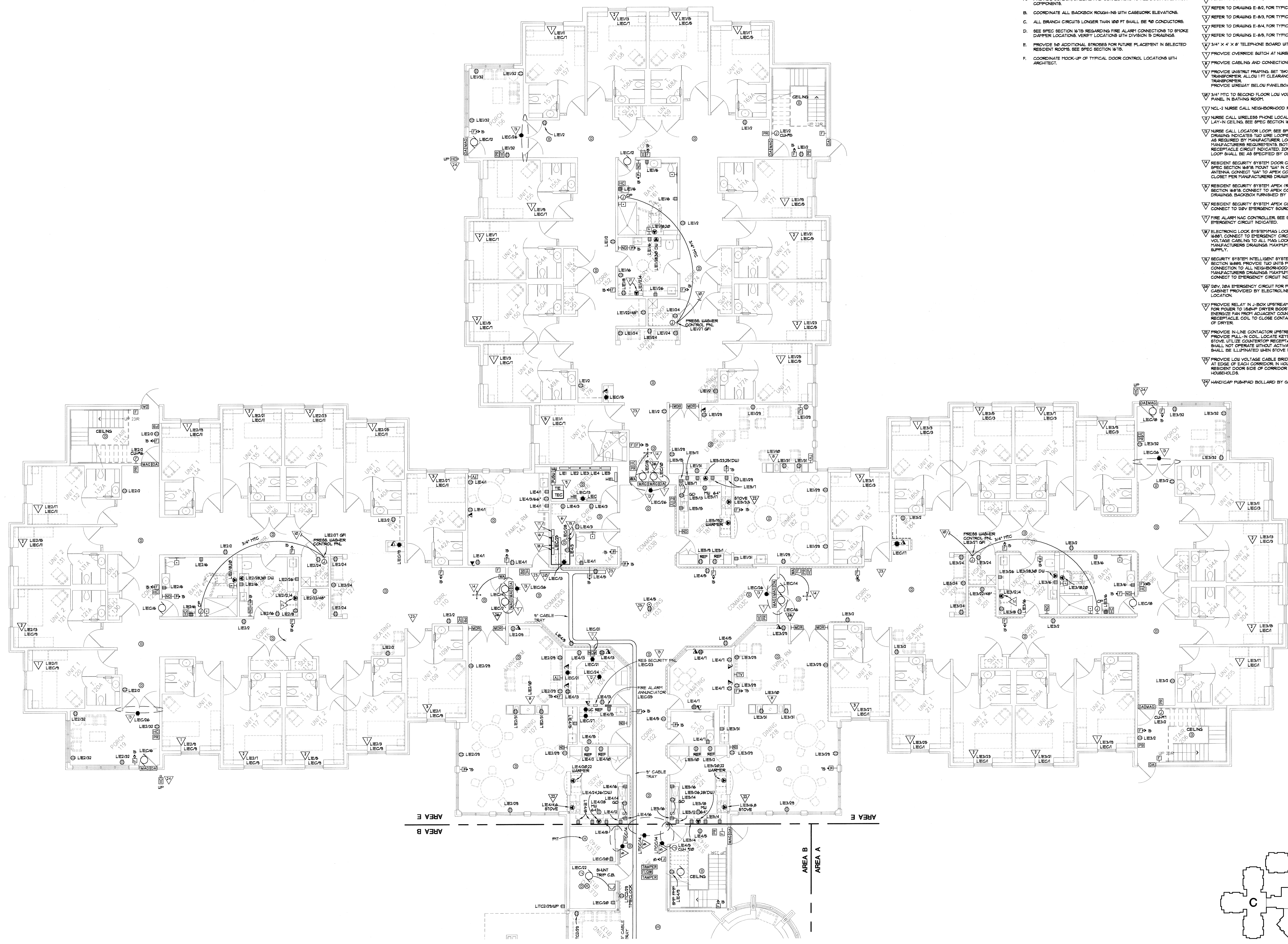
I hereby certify that this plan, specification, or report was prepared by me or under my direct supervision and that I am a duly Licensed Professional Engineer under the laws of the State of Wisconsin.
 Dennis R. Busell Registration No. E-33280

ELECTRICAL POWER & AUXILIARY SYSTEMS
 LEVEL 1 - AREA D

Date **8/11/00**

a/1 **E-4**

Scale **1/8"=1'-0"** Project Number **09169**

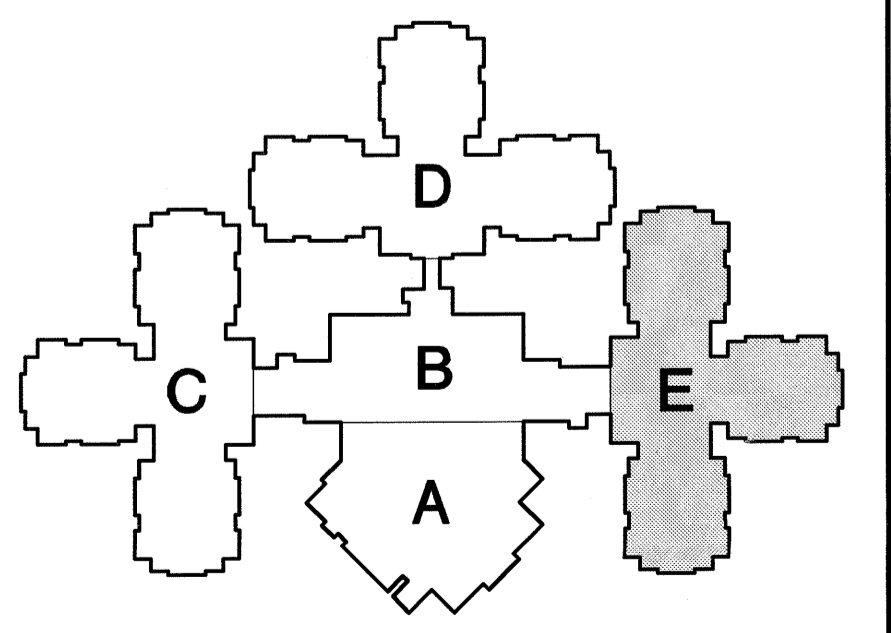


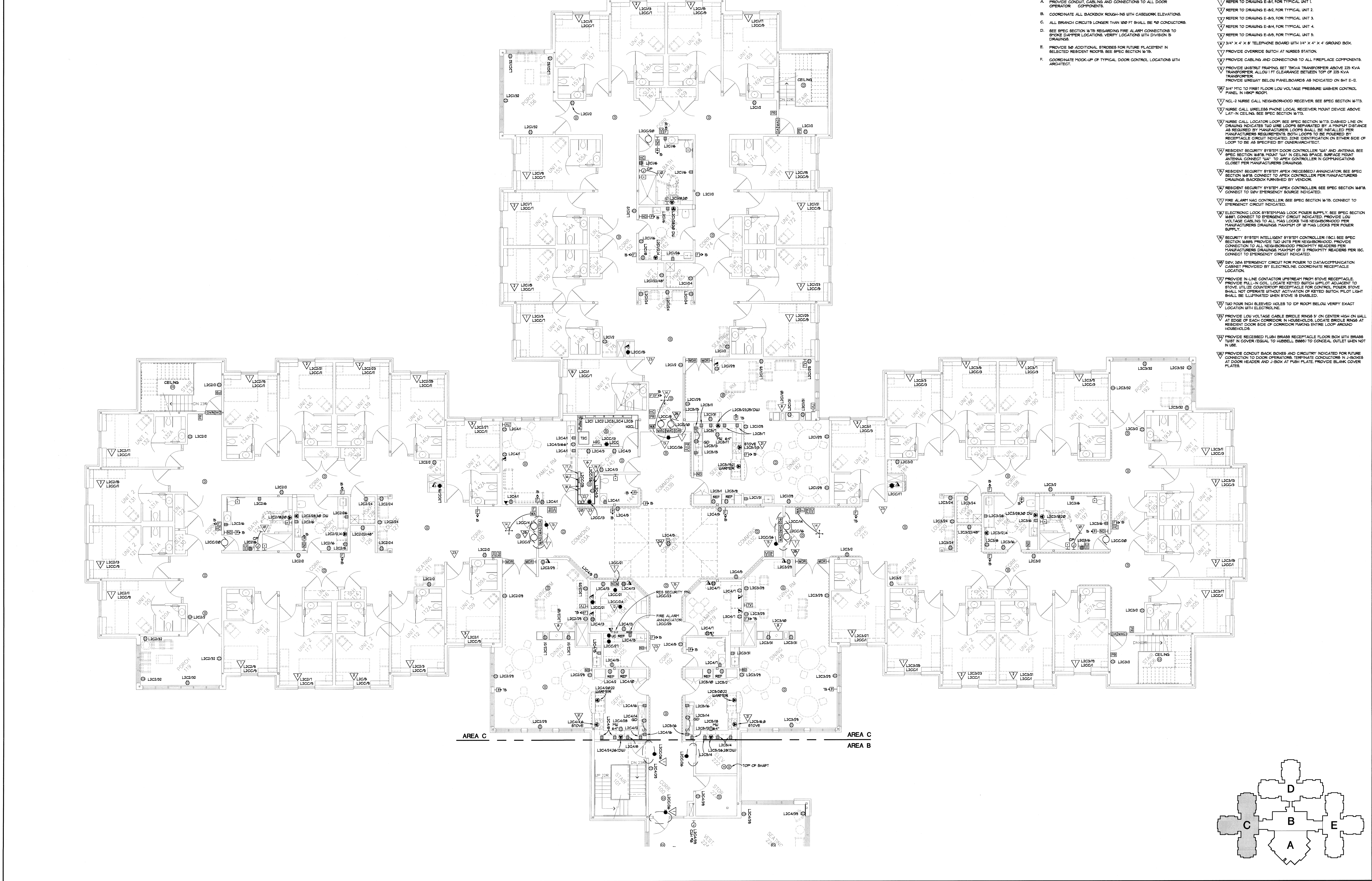
GENERAL NOTES:

- A. PROVIDE CONDUIT, CABLES AND CONNECTIONS TO ALL DOOR OPERATOR COMPONENTS.
- B. COORDINATE ALL BACKBOX ROUGH-INS WITH CASEWORK ELEVATIONS.
- C. ALL BRANCH CIRCUITS LONGER THAN 100 FT SHALL BE NO CONDUCTORS.
- D. SEE SPEC SECTION 1618 REGARDING FIRE ALARM CONNECTIONS TO SMOKE DAMPER LOCATIONS. VERIFY LOCATIONS WITH DIVISION 5 DRAWINGS.
- E. PROVIDE 50 ADDITIONAL STROBES FOR FUTURE PLACEMENT IN SELECTED RESIDENT ROOMS. SEE SPEC SECTION 1618.
- F. COORDINATE HOOR-UP OF TYPICAL DOOR CONTROL LOCATIONS WITH ARCHITECT.

KEY NOTES:

- ▽ REFER TO DRAWING E-5M FOR TYPICAL UNIT 1.
- ▽ REFER TO DRAWING E-5N FOR TYPICAL UNIT 2.
- ▽ REFER TO DRAWING E-5O FOR TYPICAL UNIT 3.
- ▽ REFER TO DRAWING E-5P FOR TYPICAL UNIT 4.
- ▽ REFER TO DRAWING E-5Q FOR TYPICAL UNIT 5.
- ▽ 3/4" X 4 X 8 TELEPHONE BOARD WITH 14" X 4" X 4" GROUND BOX.
- ▽ PROVIDE OVERRIDE SWITCH AT NURSES STATION.
- ▽ PROVIDE CABLES AND CONNECTIONS TO ALL FIREPLACE COMPONENTS.
- ▽ PROVIDE INSTANT PRING SET 10KVA TRANSFORMER ABOVE 225 KVA TRANSFORMER. ALLUO 1 FT CLEARANCE BETWEEN TOP OF 225 KVA TRANSFORMER. PROVIDE UNDERLAY BELOW PANELBOARDS AS INDICATED ON SHEET E-2.
- ▽ 3/4" VTC TO SECOND FLOOR LOW VOLTAGE PRESSURE WASHER CONTROL PANEL IN BATHING ROOM.
- ▽ NCL-2 NURSE CALL NEIGHBORHOOD RECEIVER. SEE SPEC SECTION 1613.
- ▽ NURSE CALL WIRELESS PHONE LOCAL RECEIVER MOUNT DEVICE ABOVE LAY-IN CEILING. SEE SPEC SECTION 1613.
- ▽ NURSE CALL LOCATOR LOOP. SEE SPEC SECTION 1613 DASHED LINE ON DRAWING INDICATES. TWO WIRE LOOPS SEPARATED BY A MINIMUM DISTANCE AS REQUIRED BY MANUFACTURER. LOOP SHALL BE INSTALLED PER MANUFACTURER'S REQUIREMENTS. BOTH LOOPS TO BE POWERED BY RECEPTACLE CIRCUIT INDICATED. ZONE IDENTIFICATION ON EITHER SIDE OF LOOP SHALL BE AS SPECIFIED BY MANUFACTURER.
- ▽ RESIDENT SECURITY SYSTEM DOOR CONTROLLER 'U' AND ANTENNA. SEE SPEC SECTION 1618 MOUNT 'U' IN CEILING SPACE. SURFACE MOUNT ANTENNA. CONNECT 'U' TO APEX CONTROLLER IN COMMUNICATIONS CLOSET PER MANUFACTURER'S DRAWINGS.
- ▽ RESIDENT SECURITY SYSTEM APEX (NEEDED) ANNUNCIATOR. SEE SPEC SECTION 1618. CONNECT TO APEX CONTROLLER PER MANUFACTURER'S DRAWINGS. BACKBOX FURNISHED BY VENDOR.
- ▽ RESIDENT SECURITY SYSTEM APEX CONTROLLER. SEE SPEC SECTION 1618. CONNECT TO 20V EMERGENCY SOURCE INDICATED.
- ▽ FIRE ALARM NAC CONTROLLER. SEE SPEC SECTION 1618. CONNECT TO EMERGENCY CIRCUIT INDICATED.
- ▽ ELECTRONIC LOCK SYSTEM HAS LOCK POWER SUPPLY. SEE SPEC SECTION 1681. CONNECT TO EMERGENCY CIRCUIT INDICATED. PROVIDE LOW VOLTAGE CABLES TO ALL 'HAG' LOCKS. THIS NEIGHBORHOOD PER MANUFACTURER'S DRAWINGS. MAXIMUM OF 10 'HAG' LOCKS PER POWER SUPPLY.
- ▽ SECURITY SYSTEM INTELLIGENT SYSTEM CONTROLLER (ISC). SEE SPEC SECTION 1618. PROVIDE TWO UNITS PER NEIGHBORHOOD. PROVIDE CONNECTION TO ALL NEIGHBORHOOD PROXIMITY READERS PER MANUFACTURER'S DRAWINGS. MAXIMUM OF 2 PROXIMITY READERS PER ISC. CONNECT TO EMERGENCY CIRCUIT INDICATED.
- ▽ 20V 20A EMERGENCY CIRCUIT FOR POWER TO DATA/COMMUNICATIONS CABINET PROVIDED BY ELECTROLINE. COORDINATE RECEPTACLE LOCATION.
- ▽ PROVIDE RELAY IN J-BOX UPSTREAM ADJACENT TO DRYER RECEPTACLE FOR POWER TO 100W DRYER BOOSTER FAN LOCATED ABOVE DRYER. ENERGIZE FAN FROM ADJACENT COUNTERTOP NORMAL POWERED RECEPTACLE. COIL TO CLOSE CONTACTS, ENERGIZING FAN UPON ACTUATION OF DRYER.
- ▽ PROVIDE IN-LINE CONTACTOR UPSTREAM FROM STOVE RECEPTACLE. PROVIDE PULL-IN COIL. LOCATE KEYPAD SWITCH ADJACENT TO STOVE. UTILIZE CONTACTOR RECEPTACLE FOR CONTROL POWER. STOVE SHALL NOT OPERATE WITHOUT ACTIVATION OF KEYPAD SWITCH. PILOT LIGHT SHALL BE ILLUMINATED WHEN STOVE IS DISABLED.
- ▽ PROVIDE LOW VOLTAGE CABLE BRIDLE RINGS 3" ON CENTER HIGH ON WALL AT EDGE OF EACH CORRIDOR. IN HOUSEHOLDS, LOCATE BRIDLE RINGS AT RESIDENT DOOR SIDE OF CORRIDOR PARKING ENTIRE LOOP AROUND HOUSEHOLDS.
- ▽ HANDICAP PUSH/PAD BOLLARD BY GC.



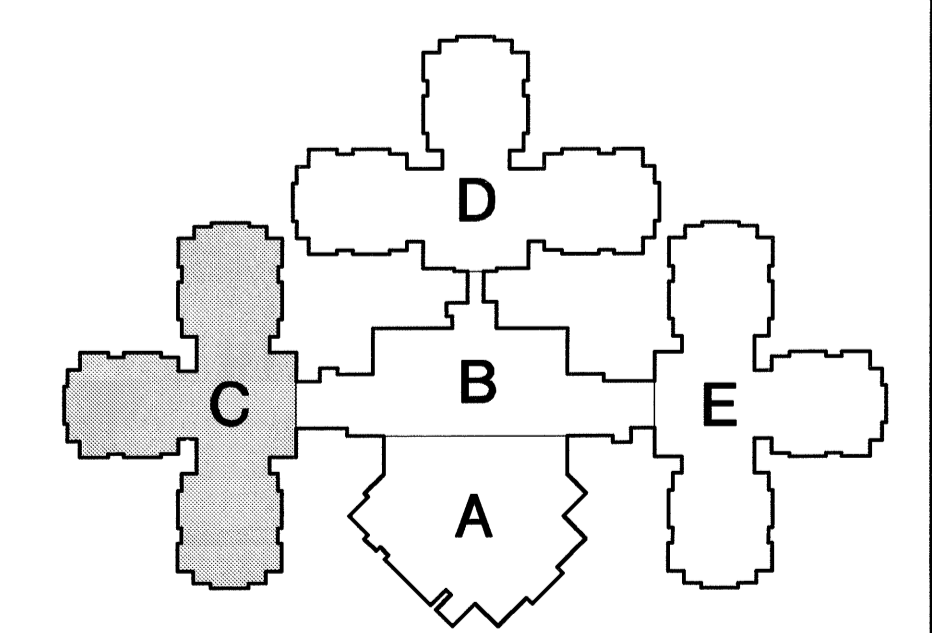


GENERAL NOTES:

- A. PROVIDE CONDUIT, CABLING AND CONNECTIONS TO ALL DOOR OPERATOR COMPONENTS.
- B. COORDINATE ALL BACKBOX ROUGH-IN'S WITH CASWORK ELEVATIONS.
- C. ALL BRANCH CIRCUITS LONGER THAN 100 FT SHALL BE #10 CONDUCTORS.
- D. SEE SPEC SECTION 16.75 REGARDING FIRE ALARM CONNECTIONS TO SMOKE DAMPER LOCATIONS. VERIFY LOCATIONS WITH VISION 9 DRAWINGS.
- E. PROVIDE 50 ADDITIONAL STROBES FOR FUTURE FLUORESCENT IN SELECTED RESIDENT ROOMS. SEE SPEC SECTION 16.18.
- F. COORDINATE HOOK-UP OF TYPICAL DOOR CONTROL LOCATIONS WITH ARCHITECT.

KEY NOTES:

- 1. REFER TO DRAWING E-01 FOR TYPICAL UNIT 1.
- 2. REFER TO DRAWING E-02 FOR TYPICAL UNIT 2.
- 3. REFER TO DRAWING E-03 FOR TYPICAL UNIT 3.
- 4. REFER TO DRAWING E-04 FOR TYPICAL UNIT 4.
- 5. REFER TO DRAWING E-05 FOR TYPICAL UNIT 5.
- 6. PROVIDE OVERIDE SWITCH AT NURSES STATION.
- 7. PROVIDE CABLING AND CONNECTIONS TO ALL FIREPLACE COMPONENTS.
- 8. PROVIDE UNISTRUT BRACING SET 20KVA TRANSFORMER ABOVE 275 KVA TRANSFORMER. ALLOW 1 FT CLEARANCE BETWEEN TOP OF 275 KVA TRANSFORMER AND BELOW PANELBOARDS AS INDICATED ON SHEET E-3.
- 9. 3/4" MTC TO FIRST FLOOR LOW VOLTAGE PRESSURE WASHER CONTROL PANEL IN 100K ROOM.
- 10. NCL-2 NURSE CALL NEIGHBORHOOD RECEIVER. SEE SPEC SECTION 16.13.
- 11. NURSE CALL WIRELESS PHONE LOCAL RECEIVER MOUNT DEVICE ABOVE LAT-IN CELLING. SEE SPEC SECTION 16.13.
- 12. NURSE CALL LOCATION LOOP. SEE SPEC SECTION 16.13. DASHED LINE ON DRAWING INDICATES TWO WIRE LOOPS SEPARATED BY A MINIMUM DISTANCE AS REQUIRED BY MANUFACTURER. LOOPS SHALL BE INSTALLED PER RECEPTACLE CIRCUIT INDICATED. ZONE IDENTIFICATION ON EITHER SIDE OF LOOP TO BE AS SPECIFIED BY MANUFACTURER.
- 13. RESIDENT SECURITY SYSTEM DOOR CONTROLLER "A" AND ANTENNA. SEE SPEC SECTION 16.18. MOUNT "A" IN CEILING SPACE. SURFACE MOUNT ANTENNA CONNECT "A" TO APEX CONTROLLER IN COMMUNICATIONS CLOSET PER MANUFACTURER'S DRAWINGS.
- 14. RESIDENT SECURITY SYSTEM APEX (RECEIVED) ANNUNCIATOR. SEE SPEC SECTION 16.18. CONNECT TO APEX CONTROLLER PER MANUFACTURER'S DRAWINGS. BACKBOX FURNISHED BY VENDOR.
- 15. RESIDENT SECURITY SYSTEM APEX CONTROLLER. SEE SPEC SECTION 16.18. CONNECT TO 200V EMERGENCY SOURCE INDICATED.
- 16. FIRE ALARM NAC CONTROLLER. SEE SPEC SECTION 16.18. CONNECT TO EMERGENCY CIRCUIT INDICATED.
- 17. ELECTRONIC LOCK SYSTEM HAS LOCK POWER SUPPLY. SEE SPEC SECTION 16.81. CONNECT TO EMERGENCY CIRCUIT INDICATED. PROVIDE LOW VOLTAGE CABLES TO ALL MAG LOCKS THIS NEIGHBORHOOD PER MANUFACTURER'S DRAWINGS. MAXIMUM OF 10 MAG LOCKS PER POWER SUPPLY.
- 18. SECURITY SYSTEM INTELLIGENT SYSTEM CONTROLLER (ISC). SEE SPEC SECTION 16.81. PROVIDE TWO UNITS PER NEIGHBORHOOD. PROVIDE CONNECTION TO ALL NEIGHBORHOOD PRIORITY READERS PER MANUFACTURER'S DRAWINGS. MAXIMUM OF 2 PRIORITY READERS PER ISC. CONNECT TO EMERGENCY CIRCUIT INDICATED.
- 19. 200V 20A EMERGENCY CIRCUIT FOR POWER TO DATA/COMMUNICATIONS CABINET PROVIDED BY ELECTROLINE. COORDINATE RECEPTACLE LOCATION.
- 20. PROVIDE IN-LINE CONTACTOR UPSTREAM FROM STOVE RECEPTACLE. PROVIDE MILLIN GOLL LOCATE KETED SWITCH SUPPLY ADJACENT TO STOVE. UTILIZE COUPLER RECEPTACLE FOR CONTROL. POWER STOVE SHALL NOT OPERATE UNTIL ACTIVATION OF KETED SWITCH PILOT LIGHT SHALL BE ILLUMINATED WHEN STOVE IS ENABLED.
- 21. TWO FOUR NGH BEELED HOLES TO IDF ROOM BELOW. VERIFY EXACT LOCATION WITH ELECTROLINE.
- 22. PROVIDE LOW VOLTAGE CABLE BRIDLE RINGS 9" ON CENTER HIGH ON WALL AT EDGE OF EACH CORRIDOR. IN HUBBELL'S LOCATE BRIDLE RINGS AT RESIDENT DOOR SIDE OF CORRIDOR MAKING ENTIRE LOOP AROUND HUBBELL'S.
- 23. PROVIDE RECEIVED FLUSH BRASS RECEPTACLE FLOOR BOX WITH BRASS TUBST N COVER (EQUAL TO HUBBELL 8880) TO CONCEAL OUTLET WHEN NOT IN USE.
- 24. PROVIDE CONDUIT BACK BOXES AND CIRCUITRY INDICATED FOR FUTURE CONNECTION TO DOOR OPERATORS. TERMINATE CONDUCTORS IN J-BOXES AT DOOR HEADER AND J-BOX AT PUSH PLATE. PROVIDE BLANK COVER PLATES.



HORTY ELVING & ASSOCIATES, INC.
 PLANNERS ARCHITECTS ENGINEERS INTERIOR DESIGNERS
 555 EAST GRANT STREET, MINNEAPOLIS, MN 55401 (612) 332-4422

BCI BUSSELL COMPANIES, INC.
 BUSSELL ENGINEERING
 953-931-2111 16026 MINNETONKA BOULEVARD STE 100
 (952) 931-1222 MINNETONKA, MN 55345

NEW HEALTH CARE FACILITY - PHASE 3B
 Outagamie County Health Center
 Appleton, Wisconsin

Drawn By **DDB** Checked By **DDB**

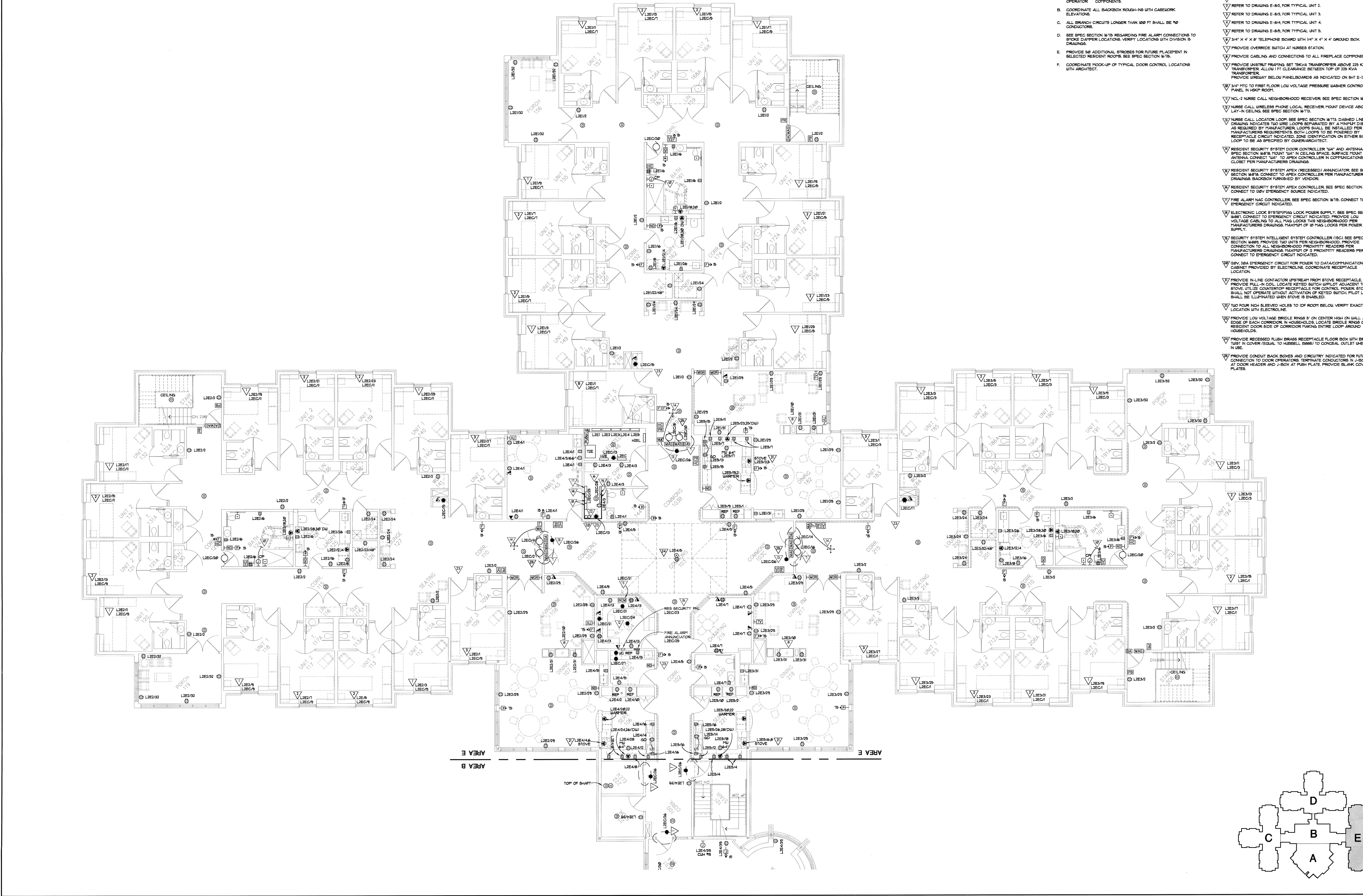
I hereby certify that this plan, specification, or report was prepared by me or under my direct supervision and that I am a duly Licensed Professional Engineer under the laws of the State of Wisconsin.
 Dennis D. Busell Registration No. 8-32280

ELECTRICAL POWER & AUXILIARY SYSTEMS
 LEVEL 2 - AREA C

Date **7/31/00**

a/1 **E-6**

Project Number **09169**

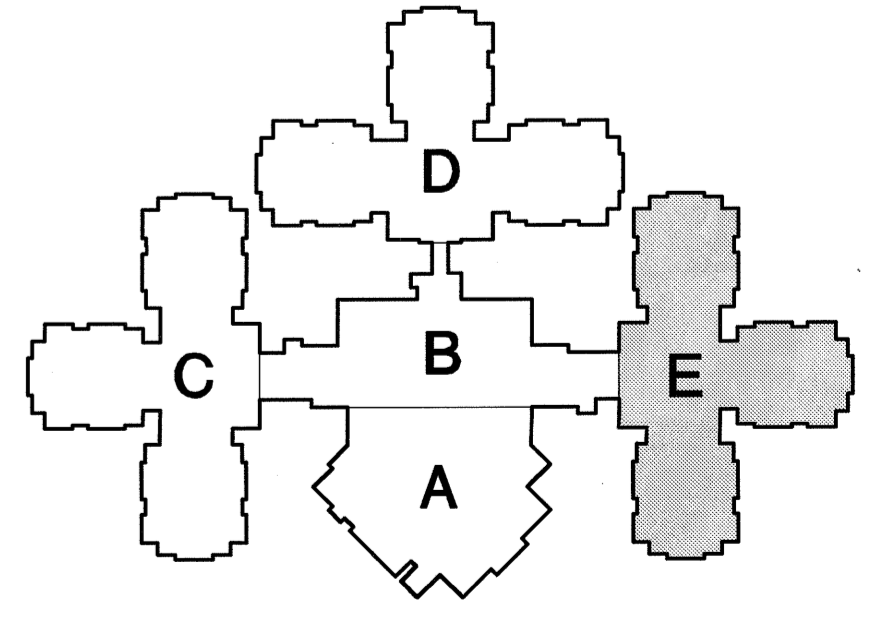


GENERAL NOTES:

- A. PROVIDE CONDUIT, CABLING AND CONNECTIONS TO ALL DOOR OPERATOR COMPONENTS.
- B. COORDINATE ALL BACKBOX ROUGH-INS WITH CASEWORK ELEVATIONS.
- C. ALL BRANCH CIRCUITS LONGER THAN 100 FT SHALL BE #10 CONDUCTORS.
- D. SEE SPEC SECTION 1610 REGARDING FIRE ALARM CONNECTIONS TO SMOKE DAMPER LOCATIONS. VERIFY LOCATIONS WITH DIVISION 5 DRAWINGS.
- E. PROVIDE #10 ADDITIONAL STROBES FOR FUTURE PLACEMENT IN SELECTED RESIDENT ROOMS. SEE SPEC SECTION 1610.
- F. COORDINATE HOOK-UP OF TYPICAL DOOR CONTROL LOCATIONS WITH ARCHITECT.

KEY NOTES:

- 1. REFER TO DRAWING E-81, FOR TYPICAL UNIT 1.
- 2. REFER TO DRAWING E-82, FOR TYPICAL UNIT 2.
- 3. REFER TO DRAWING E-83, FOR TYPICAL UNIT 3.
- 4. REFER TO DRAWING E-84, FOR TYPICAL UNIT 4.
- 5. REFER TO DRAWING E-85, FOR TYPICAL UNIT 5.
- 6. SEE SPEC SECTION 1610 REGARDING FIRE ALARM CONNECTIONS TO SMOKE DAMPER LOCATIONS. VERIFY LOCATIONS WITH DIVISION 5 DRAWINGS.
- 7. PROVIDE OVERSIZE SWITCH AT NURSES STATION.
- 8. PROVIDE CABLING AND CONNECTIONS TO ALL FIREPLACE COMPONENTS.
- 9. PROVIDE UNISTRUT FRAMING, SET 3KVA TRANSFORMER ABOVE 225 KVA TRANSFORMER. ALLOW 1 FT CLEARANCE BETWEEN TOP OF 225 KVA TRANSFORMER AND UNISTRUT BELOW PANELBOARDS AS INDICATED ON 64T E-2.
- 10. PROVIDE 3/4" NTC TO FIRST FLOOR LOW VOLTAGE PNEUMATIC WASHER CONTROL PANEL IN HOSP ROOM.
- 11. NCL-2 NURSE CALL NEIGHBORHOOD RECEIVER. SEE SPEC SECTION 1613.
- 12. NURSE CALL WIRELESS PHONE LOCAL RECEIVER MOUNT DEVICE ABOVE LAY-IN CEILING. SEE SPEC SECTION 1613.
- 13. NURSE CALL LOCATOR LOOP. SEE SPEC SECTION 1613. DASHED LINE ON DRAWING INDICATES TWO WIRE LOOPS SEPARATED BY A MINIMUM DISTANCE AS REQUIRED BY MANUFACTURER. LOOPS SHALL BE INSTALLED PER MANUFACTURER'S REQUIREMENTS. BOTH LOOPS TO BE POWERED BY RESEALABLE CIRCUIT INDICATED. ZONE IDENTIFICATION ON EITHER SIDE OF LOOP TO BE AS SPECIFIED BY OWNER/ARCHITECT.
- 14. RESIDENT SECURITY SYSTEM DOOR CONTROLLER. SEE SPEC SECTION 1618. PROVIDE #10 IN CEILING SPACE SURFACE MOUNT ANTENNA. CONNECT #10 TO APEX CONTROLLER IN COMMUNICATIONS CLOSET PER MANUFACTURER'S DRAWINGS.
- 15. RESIDENT SECURITY SYSTEM APEX (RECEIVED) ANNUNCIATOR. SEE SPEC SECTION 1618. CONNECT TO APEX CONTROLLER PER MANUFACTURER'S DRAWINGS. BACKBOX FINISHED BY VENDOR.
- 16. RESIDENT SECURITY SYSTEM APEX CONTROLLER. SEE SPEC SECTION 1618. CONNECT TO 24V EMERGENCY SOURCE INDICATED.
- 17. FIRE ALARM APEX CONTROLLER. SEE SPEC SECTION 1618. CONNECT TO EMERGENCY CIRCUIT INDICATED.
- 18. ELECTRONIC LOCK SYSTEM MAG LOCK POWER SUPPLY. SEE SPEC SECTION 1681. CONNECT TO EMERGENCY CIRCUIT INDICATED. PROVIDE LOW VOLTAGE CABLING TO ALL MAG LOCKS THROUGH NEIGHBORHOOD PER MANUFACTURER'S DRAWINGS. MAXIMUM OF 10 MAG LOCKS PER POWER SUPPLY.
- 19. SECURITY SYSTEM INTELLIGENT SYSTEM CONTROLLER (ISC). SEE SPEC SECTION 1681. PROVIDE TWO UNITS PER NEIGHBORHOOD. PROVIDE CONNECTION TO ALL NEIGHBORHOOD PROXIMITY READERS PER MANUFACTURER'S DRAWINGS. MAXIMUM OF 10 PROXIMITY READERS PER ISC. CONNECT TO EMERGENCY CIRCUIT INDICATED.
- 20. 24V 20A EMERGENCY CIRCUIT FOR POWER TO DATA/COMMUNICATION CABINET PROVIDED BY ELECTRICAL. COORDINATE RECEPTACLE LOCATION.
- 21. PROVIDE IN-LINE CONTACTOR UPSTREAM FROM STOVE RECEPTACLE. PROVIDE PULL-IN COIL. LOCATE KEYSWITCH UPSTREAM ADJACENT TO STOVE. UTILIZE COUNTERTOP RECEPTACLE FOR CONTROL. POWER STOVE SHALL NOT OPERATE WITHOUT ACTIVATION OF KEYSWITCH. PULL LIGHT SHALL BE ILLUMINATED WHEN STOVE IS ENABLED.
- 22. TWO FOUR NCH SLEEVED HOLES TO IDF ROOM BELOW. VERIFY EXACT LOCATION WITH ELECTRICAL.
- 23. PROVIDE LOW VOLTAGE BRIDLE RINGS 3" ON CENTER HIGH ON WALL AT EDGE OF EACH CORRIDOR IN HOUSEHOLDS. LOCATE BRIDLE RINGS ON RESIDENT DOOR SIDE OF CORRIDOR MAKING ENTIRE LOOP AROUND HOUSEHOLDS.
- 24. PROVIDE RECESSED FLUSH BRASS RECEPTACLE FLOOR BOX WITH BRASS TUB IN COVER (EQUAL TO HUBBELL 1686) TO GENERAL OUTLET WHEN NOT IN USE.
- 25. PROVIDE CONDUIT BACK BOXES AND CIRCUITRY INDICATED FOR FUTURE CONNECTION TO DOOR OPERATORS. TERMINATE CONDUCTORS IN J-BOXES AT DOOR HEADER AND J-BOX AT PUSH PLATE. PROVIDE BLANK COVER PLATES.



HORTY ELVING & ASSOCIATES, INC.
 PLANNERS ARCHITECTS ENGINEERS INTERIOR DESIGNERS
 523 EAST GRANT STREET - MINNEAPOLIS, MN 55401 (612) 332-4422

BCI BUSSELL COMPANIES, INC.
 16236 MINNETONKA BOULEVARD STE. 100
 MINNETONKA, MN 55345
 952-931-2111
 952-931-1222

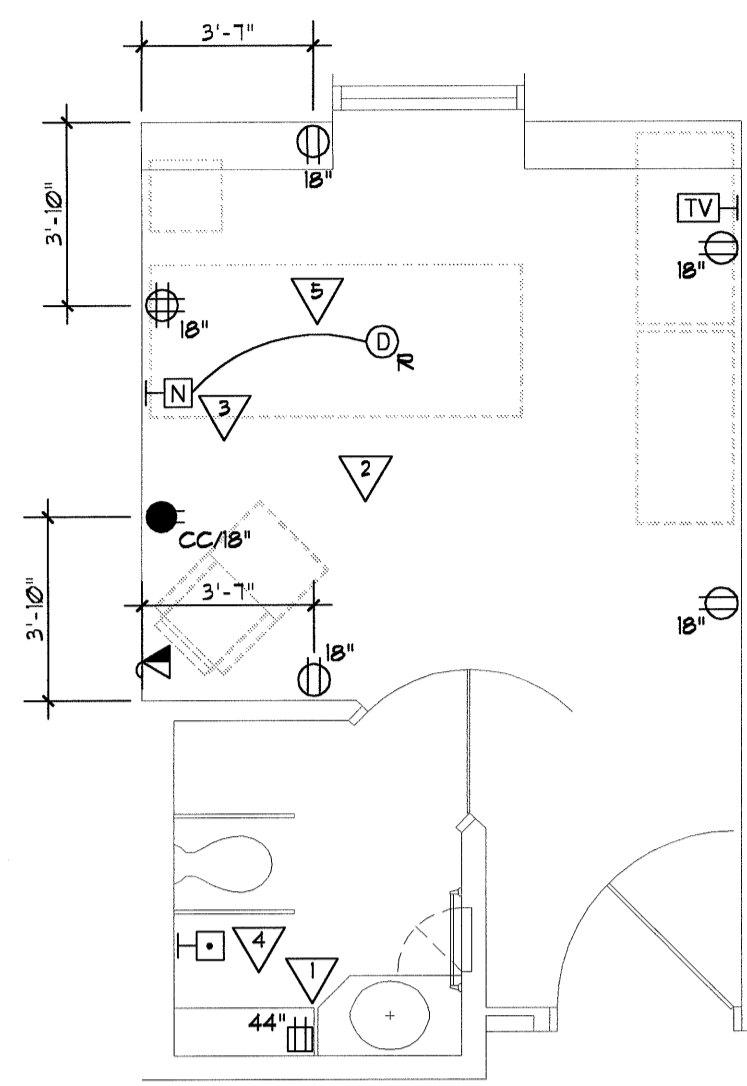
COPYRIGHT 2000 HORTY, ELVING & ASSOCIATES, INC.

NEW HEALTH CARE FACILITY - PHASE 3B
 Outagamie County Health Center
 Appleton, Wisconsin
 Drawn By **DDB** Checked By **DDB**

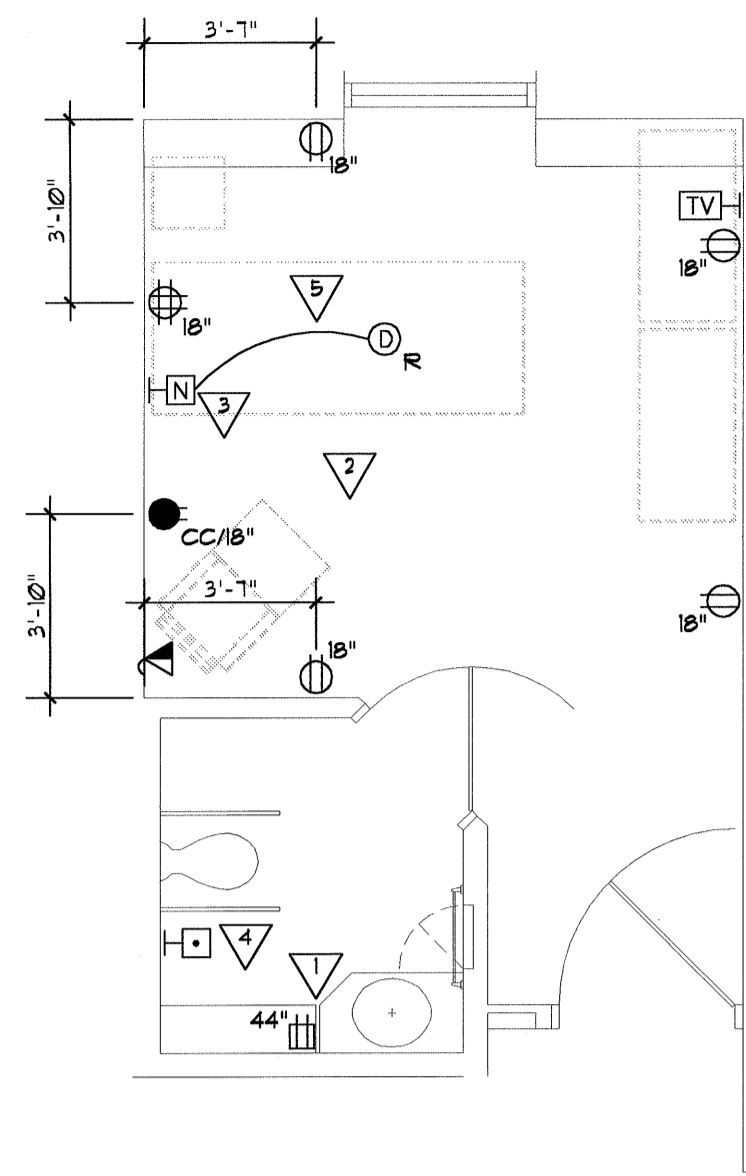
I hereby certify that this plan, specification, or report was prepared by me or under my direct supervision and that I am a duly Licensed Professional Engineer under the laws of the State of Wisconsin.
 Dennis D. Busell Registration No. E-32280

ELECTRICAL POWER & AUXILIARY SYSTEMS
LEVEL 2 - AREA E
 Date **8/11/00** Scale **1/8"=1'-0"**

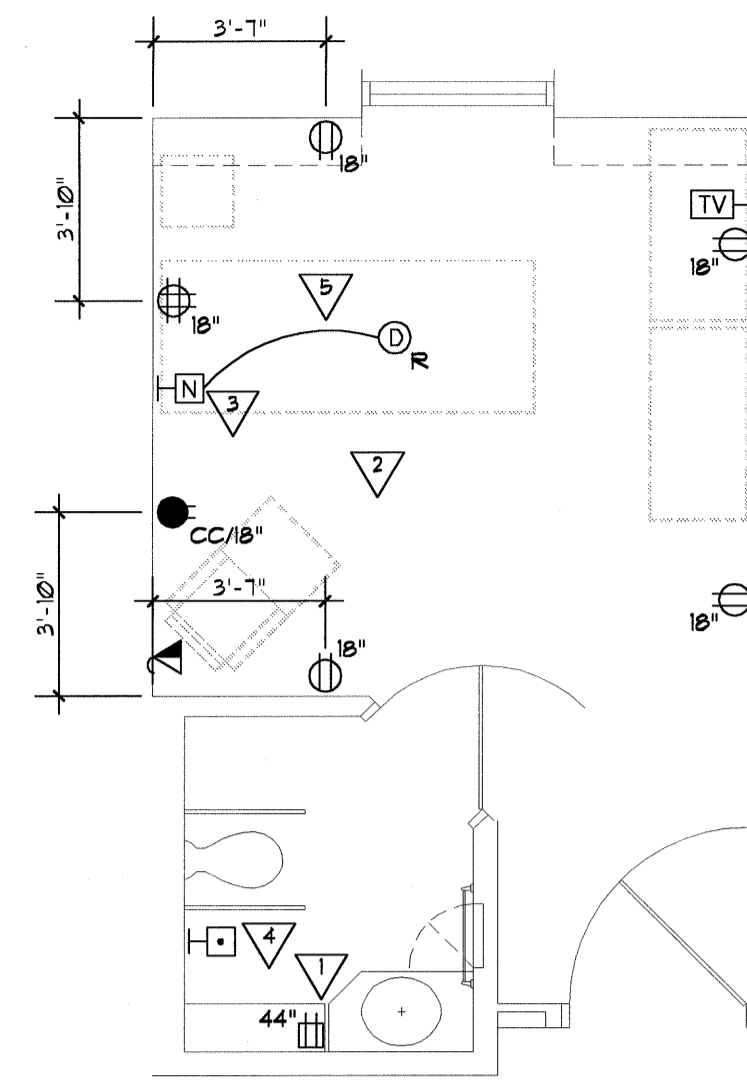
a/1 **E-7**
 Project Number **09189**



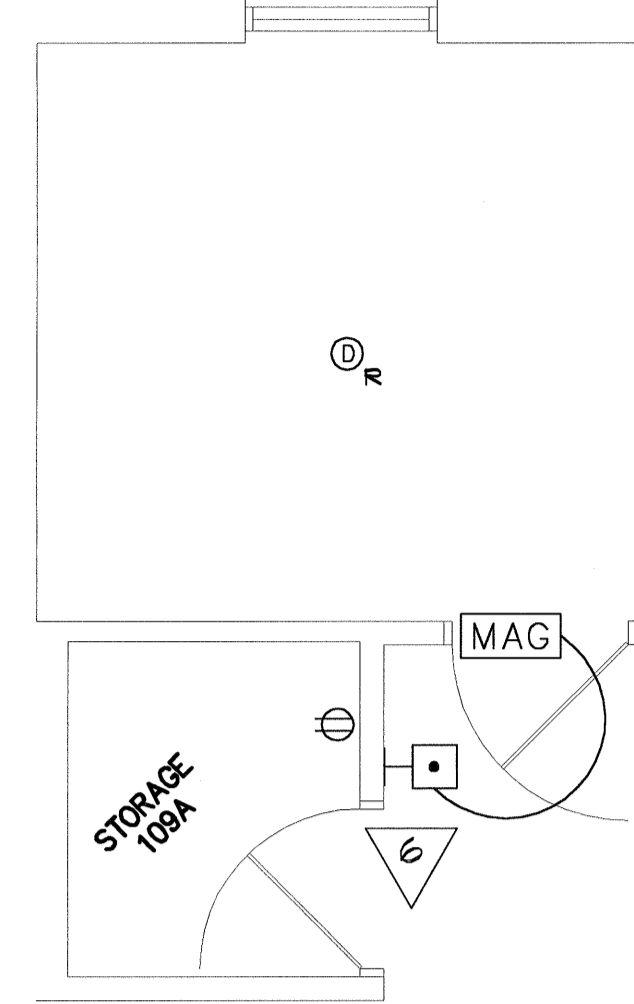
E-8
1
UNIT 1
1/4" = 1'-0"



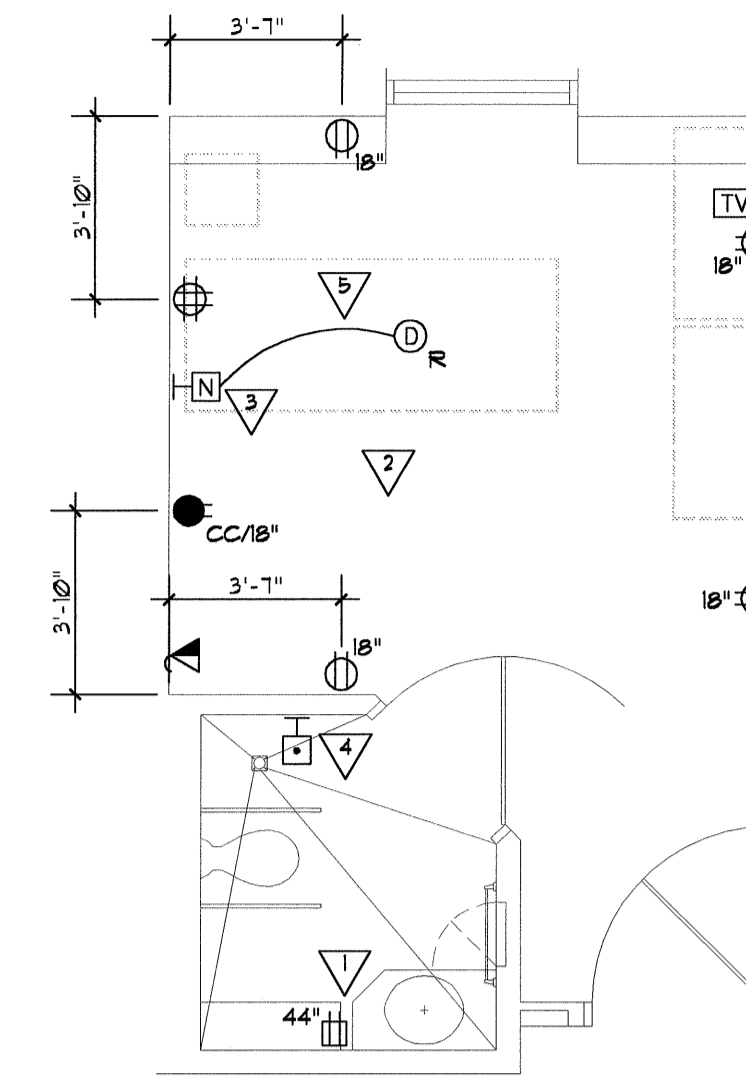
E-8
2
UNIT 2
1/4" = 1'-0"



E-8
3
UNIT 3
1/4" = 1'-0"



E-8
4
UNIT 4 - SECLUSION
1/4" = 1'-0" LEVEL 2, E109 ONLY



E-8
5
UNIT 5 - ISOLATION
1/4" = 1'-0"

UNIT PLAN KEY NOTES:

- ▽ COORDINATE GFI RECEPTACLE LOCATION WITH MIRROR AND CABINET. SEE INTERIOR ELEVATION 4-219.
- ▽ REFER TO POWER PLAN SHEETS FOR NORMAL AND EMERGENCY CIRCUITS IN EACH UNIT TYPE.
- ▽ N-45 NURSE CALL TRANSMITTER. SEE SPEC SECTION 16-713.
- ▽ S-35 NURSE CALL PULL STATION. SEE SPEC SECTION 16-713.
- ▽ PROVIDE #10 CONDUCTORS BETWEEN NURSE CALL TRANSMITTER AND SMOKE DETECTOR. SMOKE DETECTOR SHALL ALSO BE CONNECTED TO FIRE ALARM SYSTEM.
- ▽ PROVIDE CONNECTION FROM MOMENTARY-MAKE PUSH-BUTTON TO MAG LOCK. MAG LOCK TO BE ENERGIZED ONLY WHEN PUSH-BUTTON IS ACTIVATED.

**HORTY
ELVING
&
ASSOCIATES, INC.**

PLANNERS-ARCHITECTS-ENGINEERS-INTERIOR DESIGNERS
501 EAST GRANT STREET, MINNEAPOLIS, MN 55404 (612) 312-4412

BCI
BUSSELL COMPANIES, INC.

16026 MINNETONKA BOULEVARD STE 100
MINNETONKA, MN 55345

COPYRIGHT 2000
HORTY, ELVING & ASSOCIATES, INC.

NEW HEALTH CARE FACILITY - PHASE 3B
Outagamie County Health Center
Appleton, Wisconsin

I hereby certify that this plan, specification, or report was prepared by me or under my direct supervision and that I am a duly Licensed Professional Engineer under the laws of the State of Wisconsin.
Dennis D. Buswell Registration No. E-51280

**ELECTRICAL POWER &
AUXILIARY SYSTEMS
UNIT PLANS**

a/1 **E-8**

Drawn By **DDB**

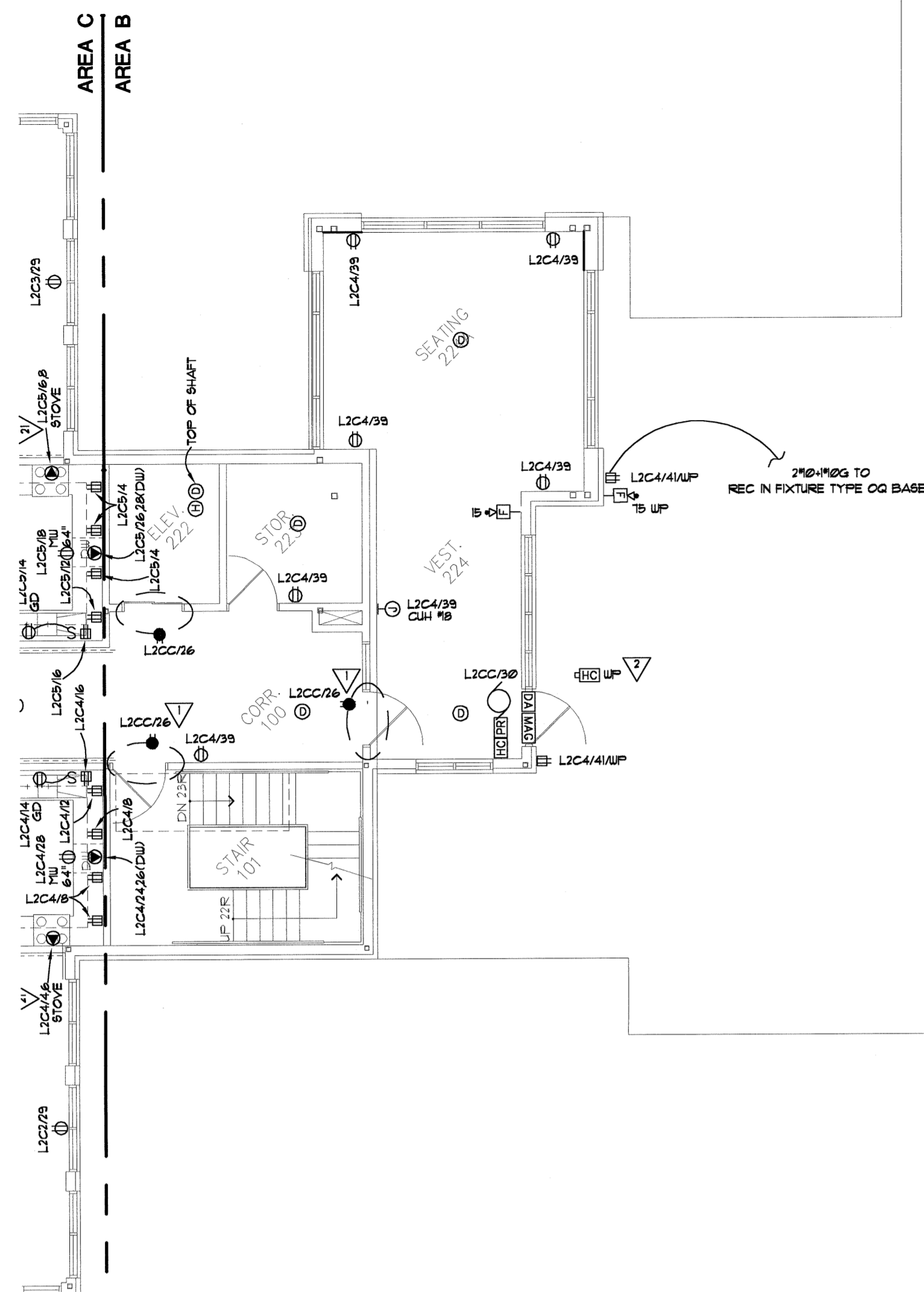
Checked By **DDB**

Date

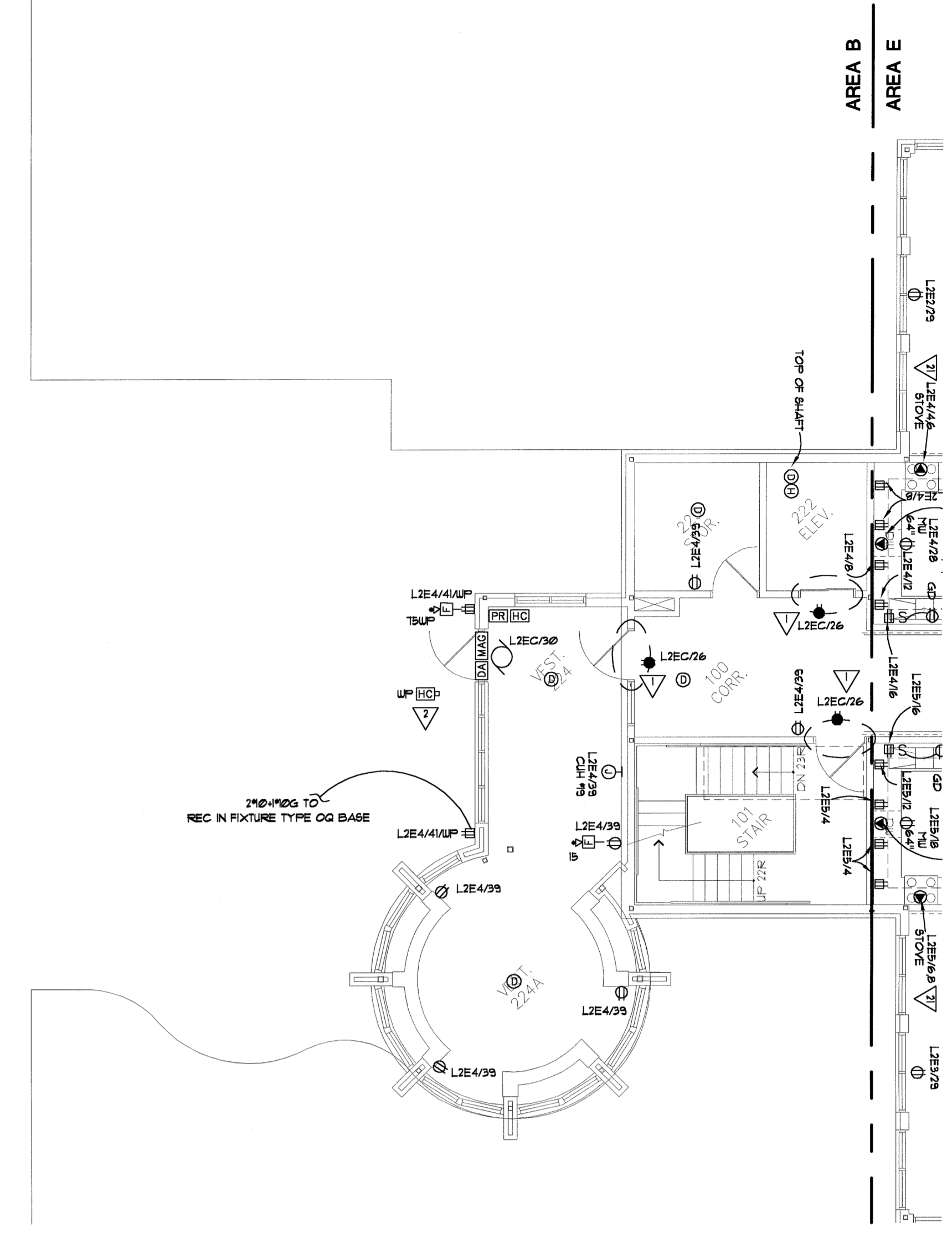
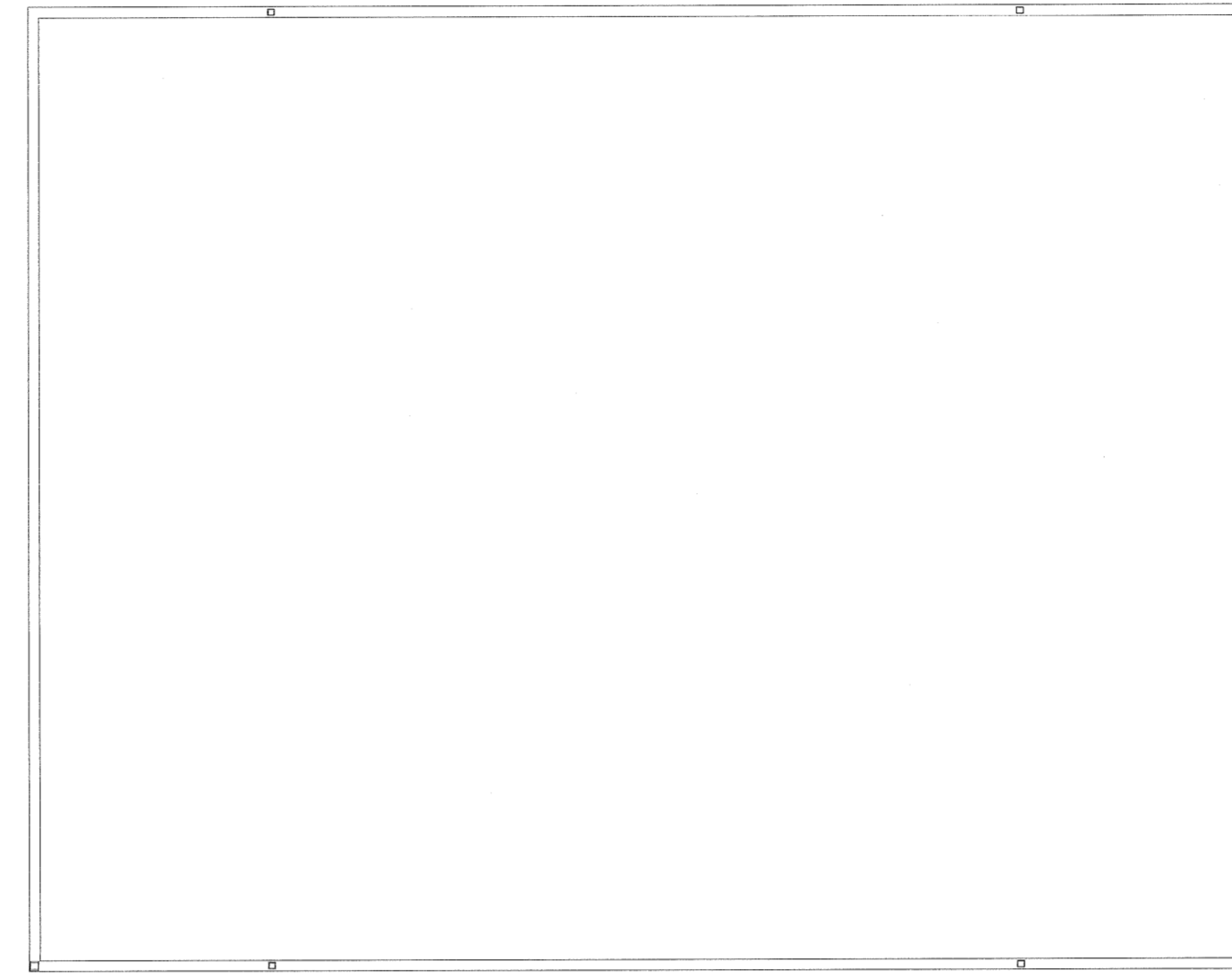
Scale **1/4"=1'-0"**

Date **8/11/00**

Project Number **09169**



E-9
1
CLERESTORY AREA B
1/8"=1'-0"



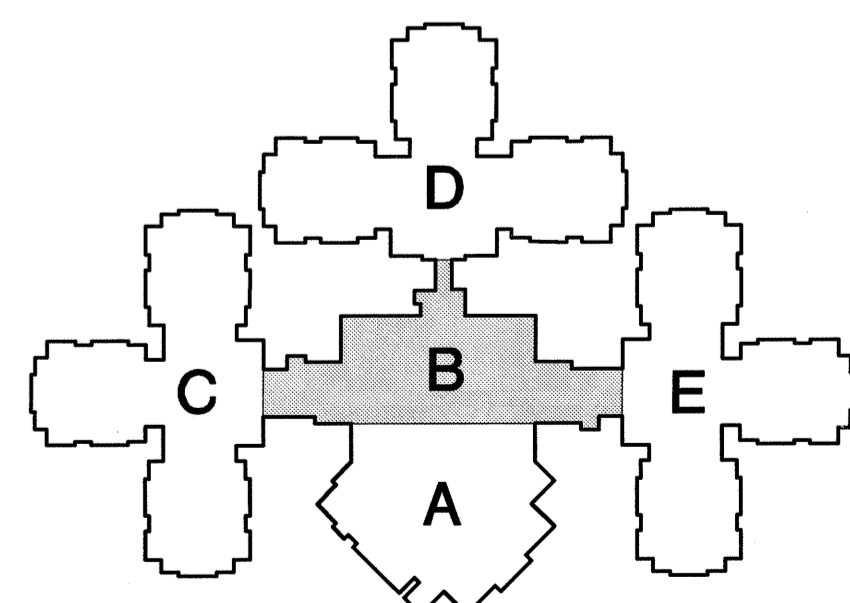
E-9
2
CLERESTORY AREA B
1/8"=1'-0"

GENERAL NOTES:

- A. PROVIDE CONDUIT, CABLING AND CONNECTIONS TO ALL DOOR OPERATOR COMPONENTS.
- B. COORDINATE ALL BACK BOX ROUGH-INS WITH CASEWORK ELEVATIONS.
- C. ALL BRANCH CIRCUITS LONGER THAN 100 FT SHALL BE #6 CONDUCTORS.
- D. SEE SPEC SECTION 1615 REGARDING FIRE ALARM CONNECTIONS TO SMOKE DAMPER LOCATIONS. VERIFY LOCATIONS WITH DIVISION 5 DRAWINGS.

KEY NOTES:

- ▽ NURSE CALL LOCATOR LOOP. SEE SPEC SECTION 1615. DASHED LINE ON DRAWING INDICATES TWO WIRE LOOPS SEPARATED BY A MINIMUM DISTANCE AS REQUIRED BY MANUFACTURER. LOOP SHALL BE INSTALLED PER MANUFACTURER'S REQUIREMENTS. BOTH LOOPS TO BE POWERED BY RECEPTACLE CIRCUIT. INDICATED ZONE IDENTIFICATION ON EITHER SIDE OF LOOP SHALL BE AS SPECIFIED BY OWNER/ARCHITECT.
- ▽ HANDICAP PUSH/PAD BOLLARD BY GC.



**HORTY
ELVING
& ASSOCIATES, INC.**

PLANNERS ARCHITECTS ENGINEERS INTERIOR DESIGNERS
85 EAST GRANT STREET MINNEAPOLIS, MN 55404 (612) 332-4422

**BCI
BUSSELL COMPANIES, INC.**

BUSSELL ENGINEERING
952-931-2111 16026 MINNETONKA BOULEVARD STE 100
(952)-931-1222 MINNETONKA, MN 55345

NEW HEALTH CARE FACILITY - PHASE 3B
Outagamie County Health Center
Appleton, Wisconsin

I hereby certify that this plan, specification, or report was prepared by me or under my direct supervision and that I am a duly Licensed Professional Engineer under the laws of the State of Wisconsin.
Dennis D. Busell Registration No. E-31290

**ELECTRICAL POWER &
AUXILIARY SYSTEM
LEVEL 2 - AREA B**

a/1

E-9

Drawn By **DDB**

Checked By **DDB**

Date

Scale **1/8"=1'-0"**

Date **7/31/00**

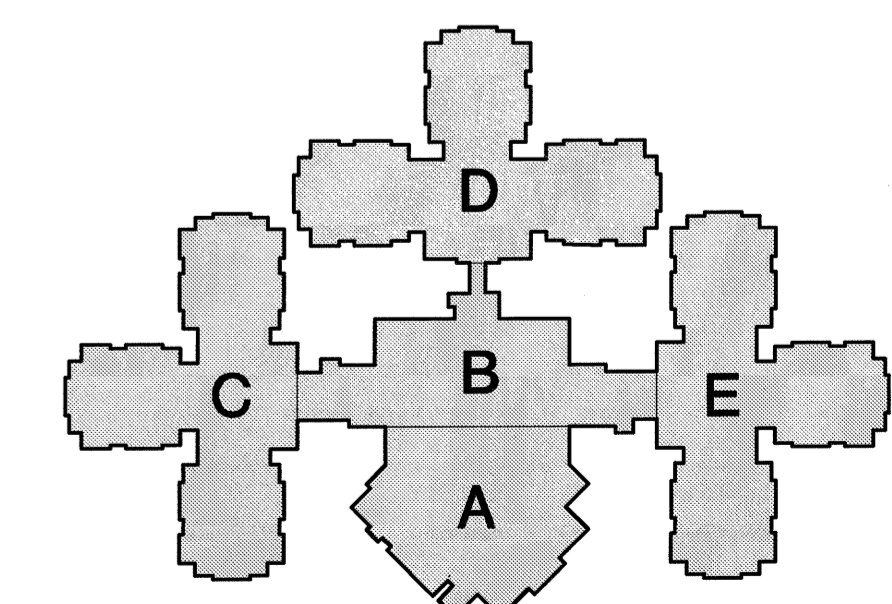
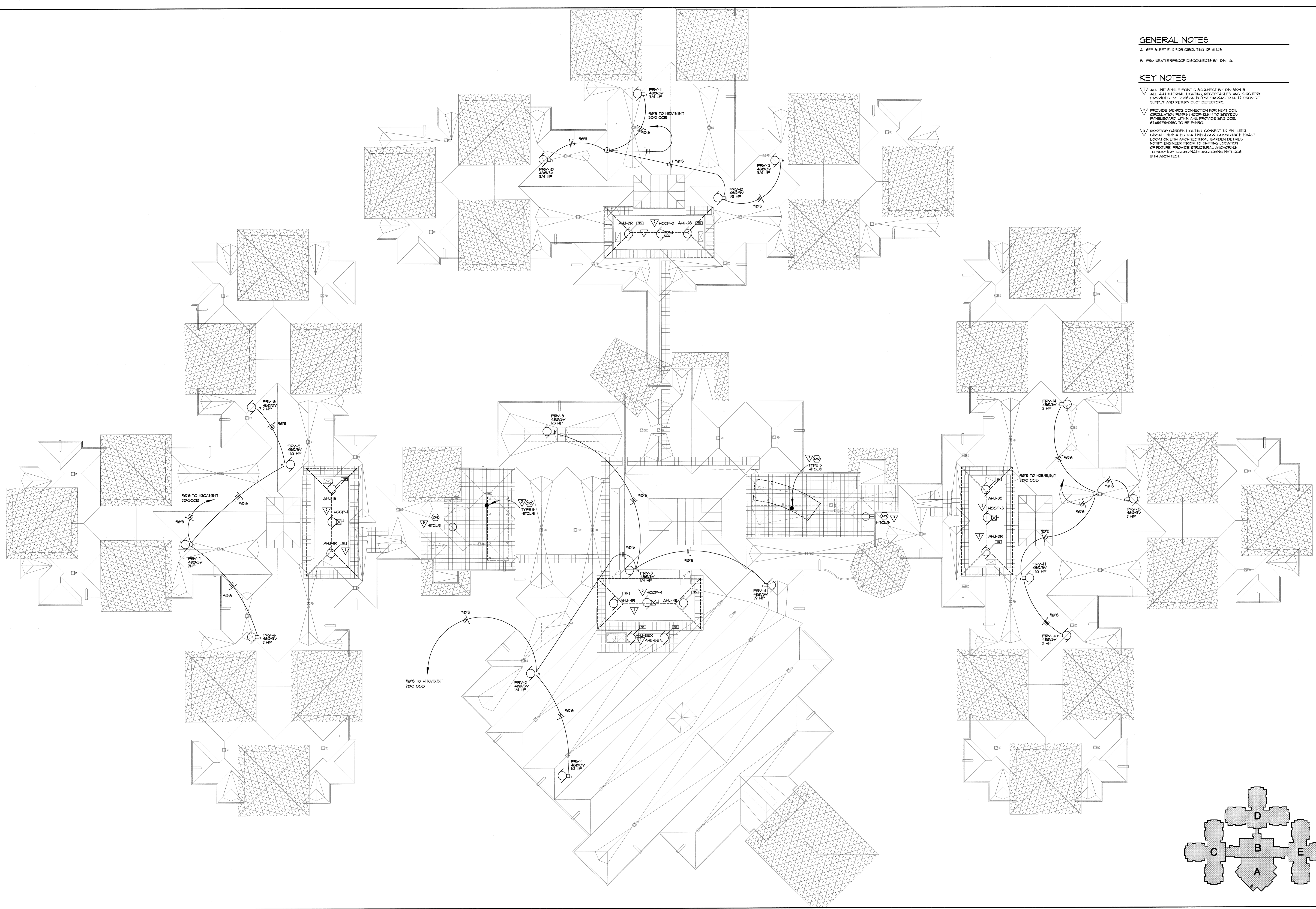
Project Number **09169**

GENERAL NOTES

- A. SEE SHEET E-12 FOR CIRCUITING OF AHU'S.
- B. FRV LEATHERPROOF DISCONNECTS BY DIV. 16.

KEY NOTES

- ▽ AHU UNIT SINGLE POINT DISCONNECT BY DIVISION 16. ALL AHU INTERNAL LIGHTING, RECEPTACLES AND CIRCUITRY PROVIDED BY DIVISION 16. PREPACKAGED UNIT PROVIDE SUPPLY AND RETURN DUCT DETECTORS.
- ▽ PROVIDE 3/4" MS CONNECTION FOR HEAT COIL, CIRCULATION PUMPS (HCCP-1,2,3,4) TO SERVICE PANELBOARD WITHIN AHU. PROVIDE 20/3 CCB. STARTER DISC TO BE FURNISHED.
- ▽ ROOFTOP GARDEN LIGHTING CONNECT TO PNL HTGL. CIRCUIT INDICATED VIA THEELOCK. COORDINATE EXACT LOCATION WITH ARCHITECTURAL GARDEN DETAILS. NOTIFY ENGINEER PRIOR TO SHIFTING LOCATION OF FIXTURE. PROVIDE STRUCTURAL ANCHORING TO ROOFTOP. COORDINATE ANCHORING METHODS WITH ARCHITECT.



**HORTY
ELVING
& ASSOCIATES, INC.**

PLANNERS ARCHITECTS ENGINEERS-INTERIOR DESIGNERS
501 EAST GRANT STREET MINNEAPOLIS, MN 55404 (612) 332-4422

BCI BUSSELL ENGINEERING
BUSSELL COMPANIES, INC.
16026 MINNETONKA BOULEVARD STE 100
MINNETONKA, MN 55345
(952) 931-2111
(952) 931-1222

COPYRIGHT 2000
HORTY, ELVING & ASSOCIATES, INC.

NEW HEALTH CARE FACILITY - PHASE 3B
Outagamie County Health Center
Appleton, Wisconsin

I hereby certify that this plan, specification, or report was prepared by me or under my direct supervision and that I am a duly Licensed Professional Engineer under the laws of the State of Wisconsin.
Deanna D. Buswell Registration No. 20681

ELECTRICAL POWER & AUXILIARY SYSTEMS
ROOF PLAN

a/1 E-10

Drawn By DDB

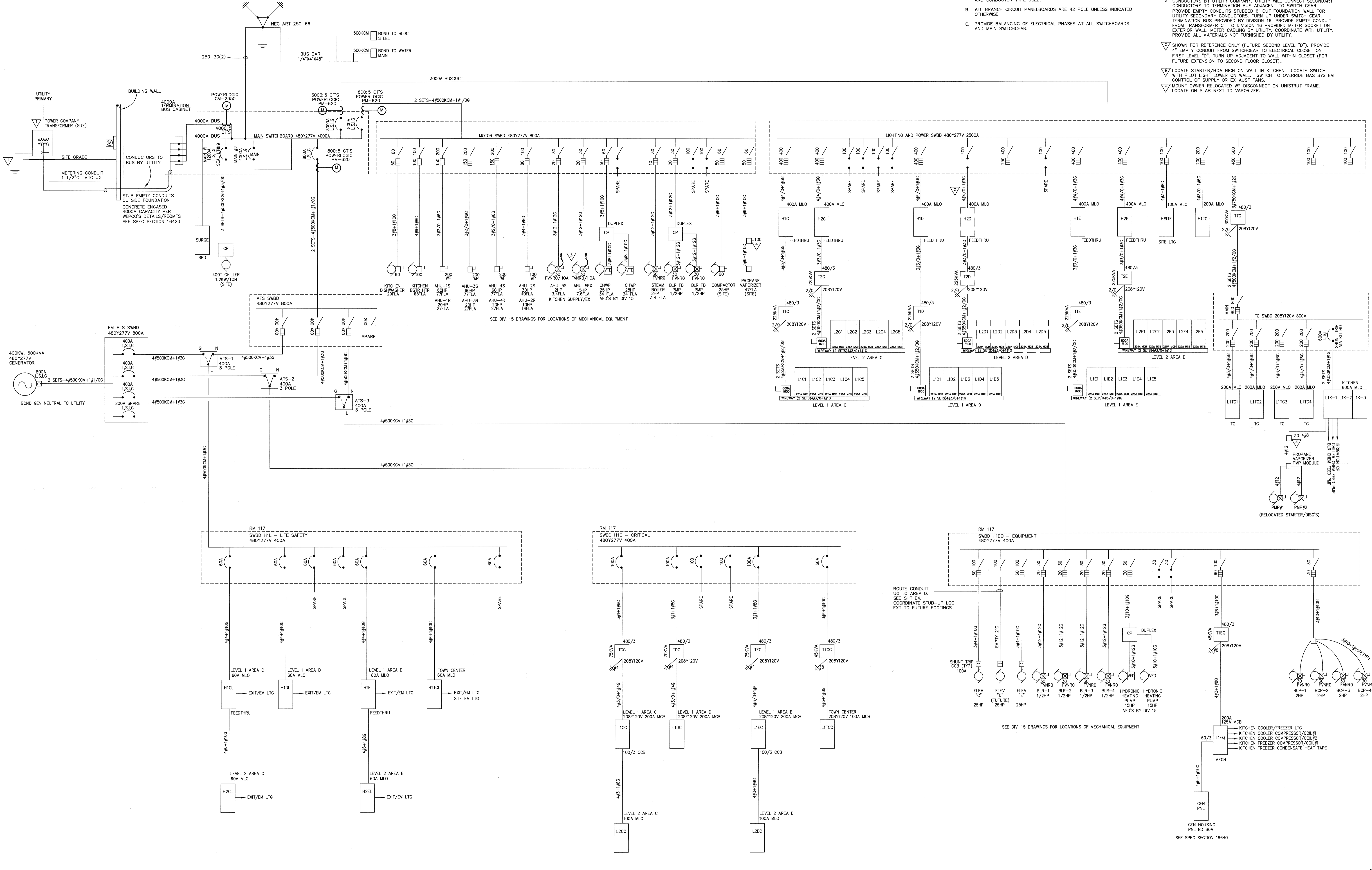
Checked By DDB

Date

Scale 1"=16'-0"

Date 8/11/00

Project Number 09169



- GENERAL NOTES**
- DIVISION 16 SHALL SIZE ALL CONDUIT BASED ON N.E.C. REQUIREMENTS AND CONDUIT TYPE USED.
 - ALL BRANCH CIRCUIT PANELBOARDS ARE 42 POLE UNLESS INDICATED OTHERWISE.
 - PROVIDE BALANCING OF ELECTRICAL PHASES AT ALL SWITCHBOARDS AND MAIN SWITCHGEAR.
- KEY NOTES:**
- TRANSFORMER PRIMARY, TRANSFORMER PAD, AND SECONDARY CONDUCTORS BY UTILITY COMPANY. UTILITY WILL CONNECT SECONDARY CONDUCTORS TO TERMINATION BUS ADJACENT TO SWITCH GEAR. PROVIDE EMPTY CONDUITS STUBBED 6" OUT FOUNDATION WALL FOR UTILITY SECONDARY CONDUCTORS. TURN UP UNDER SWITCH GEAR. TERMINATION BUS PROVIDED BY DIVISION 16. PROVIDE EMPTY CONDUIT FROM TRANSFORMER CT TO DIVISION 16 PROVIDED METER SOCKET ON EXTERIOR WALL. METER CABLING BY UTILITY. COORDINATE WITH UTILITY. PROVIDE ALL MATERIALS NOT FURNISHED BY UTILITY.
 - SHOWN FOR REFERENCE ONLY (FUTURE SECOND LEVEL "D"). PROVIDE 4" EMPTY CONDUIT FROM SWITCHGEAR TO ELECTRICAL CLOSET ON FIRST LEVEL "D". TURN UP ADJACENT TO WALL WITHIN CLOSET (FOR FUTURE EXTENSION TO SECOND FLOOR CLOSE).
 - LOCATE STARTER/AHA HIGH ON WALL IN KITCHEN. LOCATE SWITCH WITH PILOT LIGHT LOWER ON WALL. SWITCH TO OVERRIDE BAS SYSTEM CONTROL OF SUPPLY OR EXHAUST FANS.
 - MOUNT OWNER RELOCATED WP DISCONNECT ON UNISTRUT FRAME. LOCATE ON SLAB NEXT TO VAPORIZER.

HORTY ELVING & ASSOCIATES, INC.
 PLANNERS ARCHITECTS-ENGINEERS-INTERIOR DESIGNERS
 501 EAST GRANT STREET, MINNEAPOLIS, MN 55404 (612) 332-4422

BCI BUSSELL COMPANIES, INC.
 BUSSELL ENGINEERING
 952-931-2111
 16026 MINNETONKA BOULEVARD STE 100
 (952) 931-1222
 MINNETONKA, MN 55345

COPYRIGHT 2000 HORTY, ELVING & ASSOCIATES, INC.

NEW HEALTH CARE FACILITY - PHASE 3B
 Outagamie County Health Center
 Appleton, Wisconsin

Drawn By **DDB** Checked By **DDB**

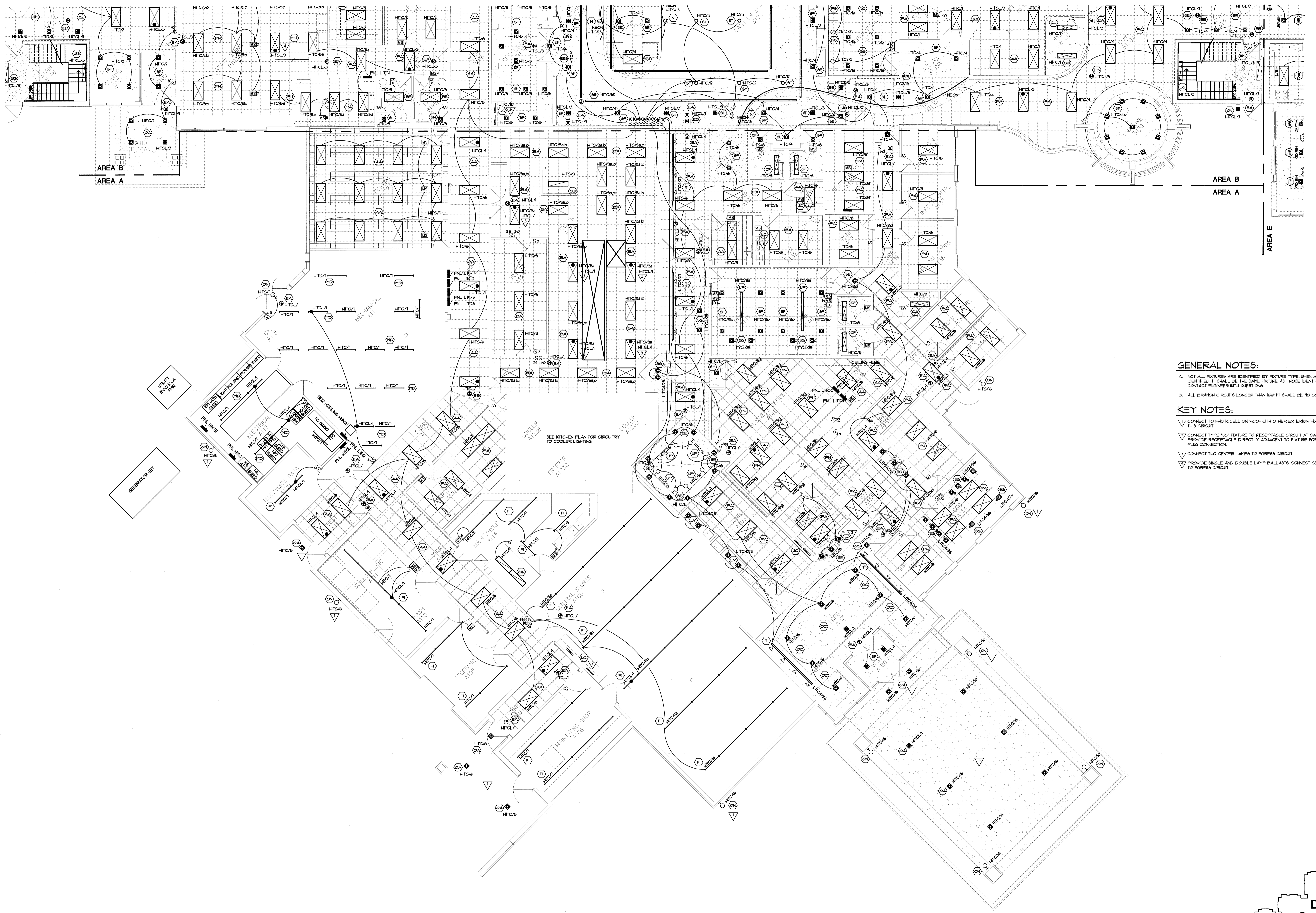
I hereby certify that this plan, specification, or report was prepared by me or under my direct supervision and that I am a duly Licensed Professional Engineer under the laws of the State of Wisconsin.
 Dennis D. Buswell Registration No. E-39280

ELECTRICAL ONE-LINE DIAGRAM

Date **8/11/00** Scale **NONE**

a/1 **E-12**

Project Number **09169**



GENERAL NOTES:

A. NOT ALL FIXTURES ARE IDENTIFIED BY FIXTURE TYPE WHEN A FIXTURE IS NOT IDENTIFIED, IT SHALL BE THE SAME FIXTURE AS THOSE IDENTIFIED AROUND IT. CONTACT ENGINEER WITH QUESTIONS.

B. ALL BRANCH CIRCUITS LONGER THAN 100 FT SHALL BE #12 CONDUCTORS.

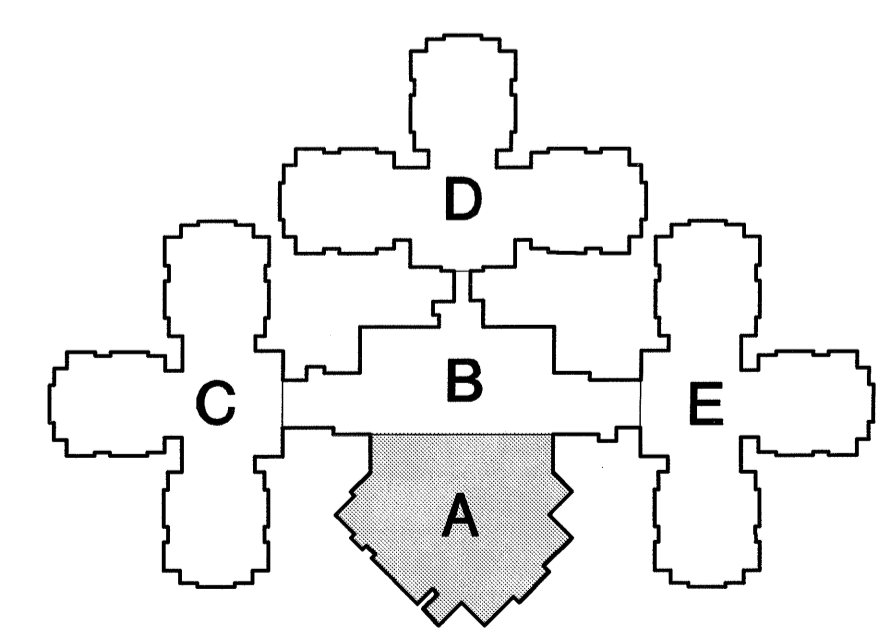
KEY NOTES:

▽ CONNECT TO PHOTOCELL ON ROOF WITH OTHER EXTERIOR FIXTURES ON THIS CIRCUIT.

▽ CONNECT TYPE 'UC' FIXTURE TO RECEPTACLE CIRCUIT AT CARBONK. PROVIDE RECEPTACLE DIRECTLY ADJACENT TO FIXTURE FOR GROUND AND PLUG CONNECTION.

▽ CONNECT TWO CENTER LAMPS TO EGRESS CIRCUIT.

▽ PROVIDE SINGLE AND DOUBLE LAMP BALLASTS. CONNECT CENTER LAMP TO EGRESS CIRCUIT.



HORTY ELVING & ASSOCIATES, INC.
 PLANNERS-ARCHITECTS-ENGINEERS-INTERIOR DESIGNERS
 305 EAST GRANT STREET, MINNEAPOLIS, MN 55404 (612) 332-4122

BCI BUSSELL COMPANIES, INC.
 BUSSELL ENGINEERING
 16026 MINNETONKA BOULEVARD STE 100
 MINNETONKA, MN 55345
 952-931-2111
 (952) 931-1222

COPYRIGHT 2000 HORTY, ELVING & ASSOCIATES, INC.

NEW HEALTH CARE FACILITY - PHASE 3B
 Outagamie County Health Center
 Appleton, Wisconsin

Drawn By **DDB** Checked By **DDB**

I hereby certify that this plan, specification, or report was prepared by me or under my direct supervision and that I am a duly Licensed Professional Engineer under the laws of the State of Wisconsin.

Dennis D. Buswell Registration No. E-32280

LIGHTING
LEVEL 1 - AREA A

Date **8/1/00**

a/1 **L-1**

Scale **1/8"=1'-0"** Project Number **08169**

